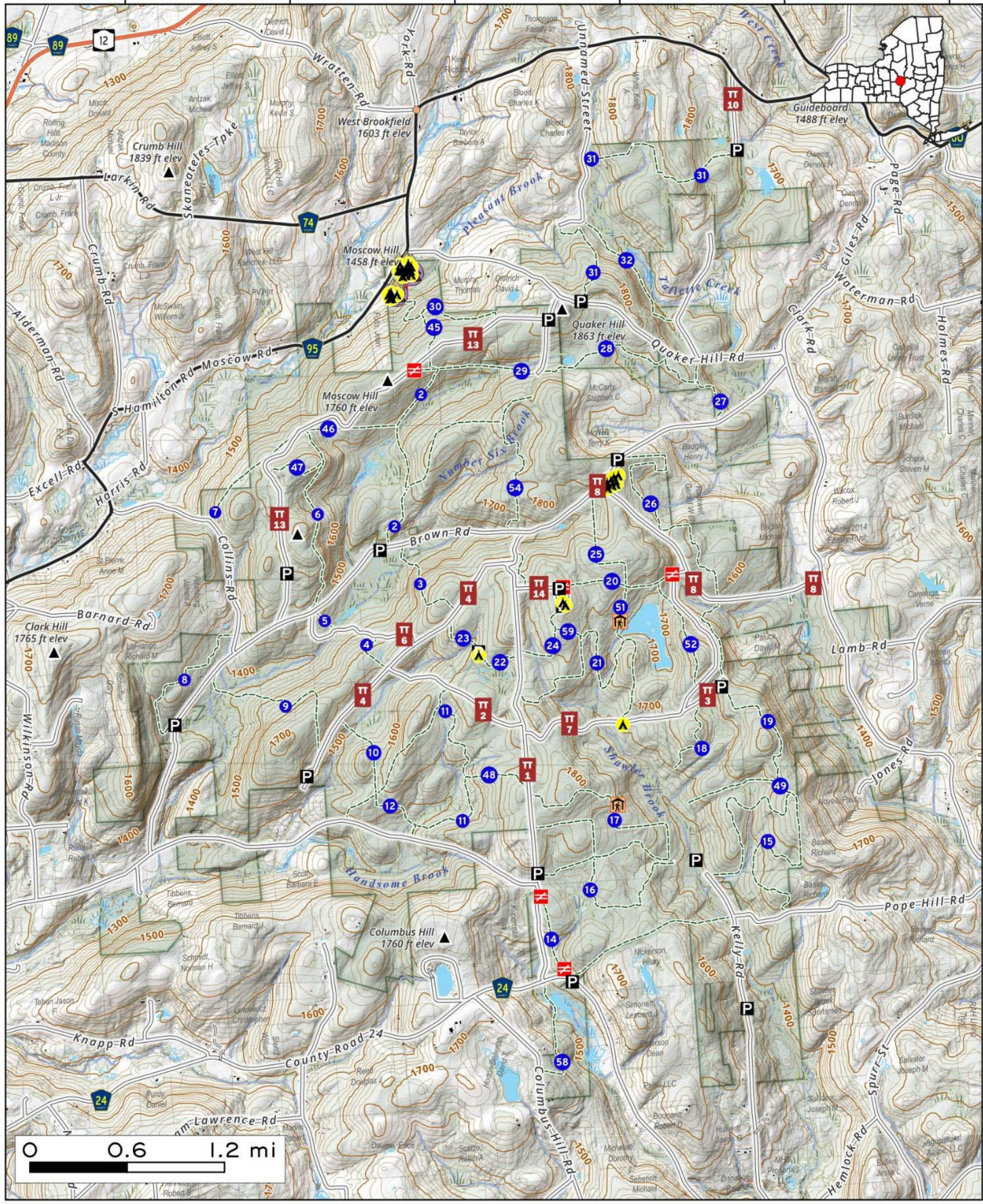


Charles E. Baker State Forest, is a 9,400-acre state forest. Known for the Brookfield Trail System, providing over 100 miles of trails for horseback riding, hiking, and mountain biking through hilly, scenic terrain. Popular activities include hunting in the dense hardwoods and fishing in nearby streams. Primitive camping is available at Moscow Hill and Cherry Ridge, featuring designated campsites with toilets, fire pits, and stalls for equestrian campers, creating a rustic, secluded getaway.



Map created by Andy Arthur on 5/14/2026 in QGIS 3.44.9-Solothurn. Data: NYS GIS and NYS DEC. More at andyarthur.org

-75.44 -75.42 -75.40 -75.38 -75.36 -75.34



42.80
42.78
42.76
42.74
42.72

