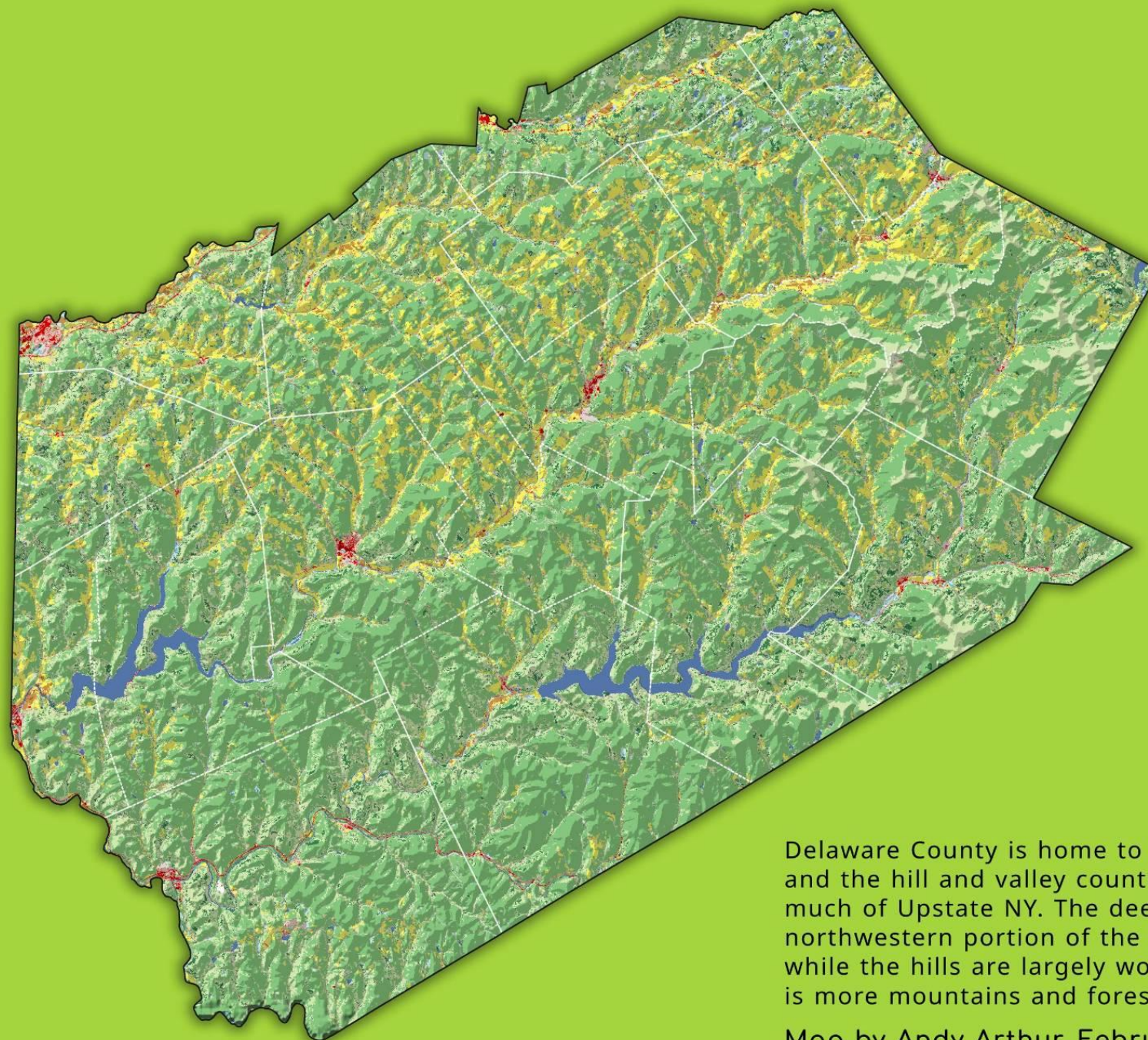


# National Land Cover Dataset 2021 - Delaware County



- Open Water
- Developed, Open Space
- Developed, Low Intensity
- Developed, Medium Intensity
- Developed High Intensity
- Barren Land (Rock/Sand/Clay)
- Deciduous Forest
- Evergreen Forest
- Mixed Forest
- Shrub/Scrub
- Grassland/Herbaceous
- Pasture/Hay
- Cultivated Crops
- Woody Wetlands
- Emergent Herbaceous Wetlands

Delaware County is home to the Western Catskills and the hill and valley country that is common in much of Upstate NY. The deep fertile valleys of the northwestern portion of the county are agricultural, while the hills are largely woods, while the southeast is more mountains and forest preserve.

Map by Andy Arthur, February 6, 2025. Free for any use.