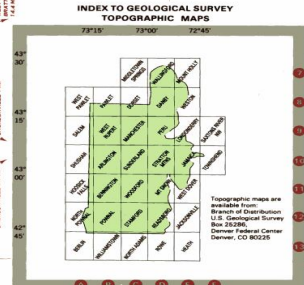
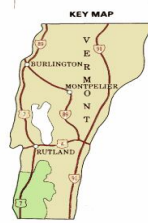
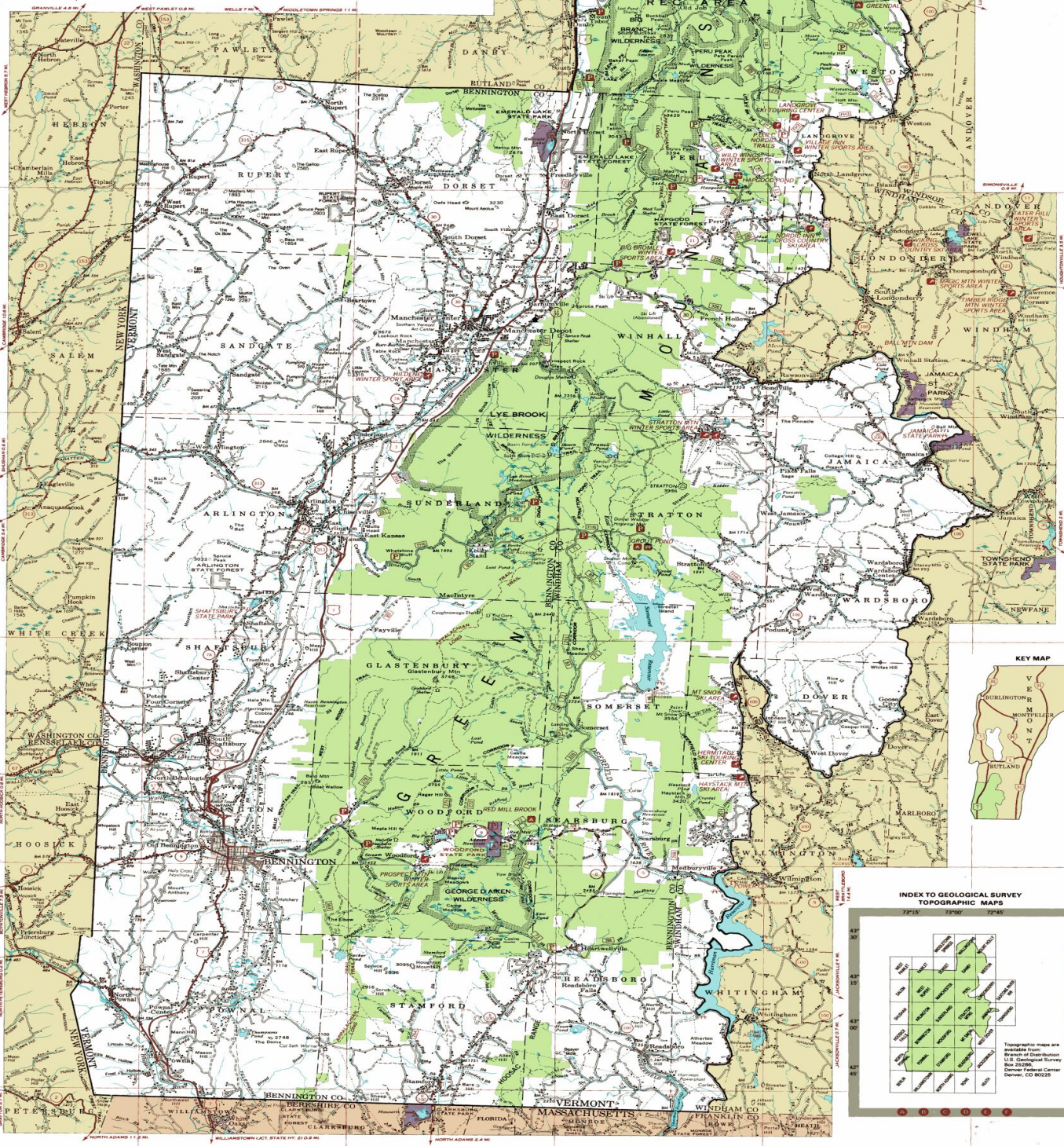


U.S. DEPARTMENT OF AGRICULTURE
FOREST SERVICE
GREEN MOUNTAIN NATIONAL FOREST
(SOUTH HALF)
VERMONT
1992

Scale 1:250,000

- LEGEND**
- | | | | |
|--|--------------------------------|--|--|
| | National Forest Boundary | | Horizontal Control Station |
| | Purchase Unit Boundary | | Permanent Lookout Station |
| | National Forest Land | | Horizontal Control Station and Permanent Lookout Station |
| | Appalachian Trail Corridor | | Lookout or Lookout Station |
| | State Park Land | | Mine, Quarry, or Gravel Pit |
| | Primary Highway | | Building, Church, School, Cemetery |
| | Secondary Highway | | Campground, National Forest |
| | Improved Light Duty | | Campground, other than National Forest |
| | Unimproved Dirt | | Picnic Area, National Forest |
| | Trail | | Picnic Area, other than National Forest |
| | U.S. Highway | | Trailhead |
| | State Highway | | Hiking Trail |
| | Forest Route | | Interpretive Trail |
| | Railroad | | Trailhead Parking |
| | Power Transmission Line | | Winter Trail Parking |
| | Trail Shelter | | Cross Country Ski Area |
| | District Ranger Office | | Downhill Ski Area |
| | Forest Supervisor Headquarters | | |



FOREST SERVICE MAP
Compiled at the Regional Office, Milwaukee, Wisconsin, 1974 from
U.S. Geological Survey base maps and maps in 1981 by the U.S.
Forest Service, Geomatics Service Center, Salt Lake City, Utah,
from 1991 correction guides.

Topographic maps are
available from:
Branch of Distribution
U.S. Geological Survey
Box 2428
Denver, CO 80226