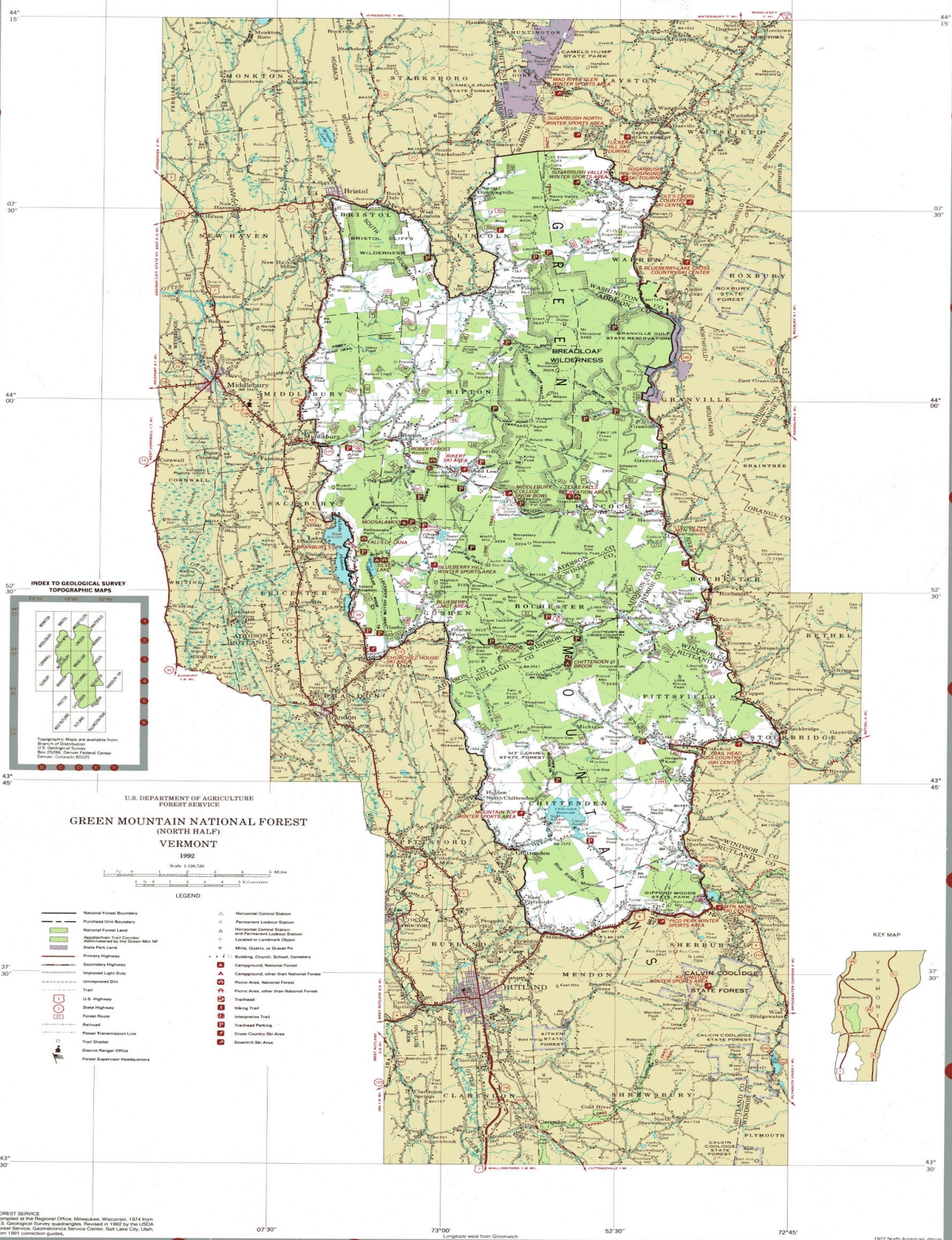


73°15' 07°30' 73°00' 52°30' 72°45'



U.S. DEPARTMENT OF AGRICULTURE
FOREST SERVICE

**GREEN MOUNTAIN NATIONAL FOREST
(NORTH HALF)
VERMONT**

1992



- LEGEND**
- National Forest Boundary
 - Purchase Unit Boundary
 - National Forest Land
 - Appalachian Trail Corridor
 - State Park Land
 - Primary Highway
 - Secondary Highway
 - Improved Light Duty
 - Unimproved Dirt
 - Trail
 - U.S. Highway
 - State Highway
 - Forest Route
 - Railroad
 - Power Transmission Line
 - Town Station
 - District Ranger Office
 - Forest Supervisor Headquarters
 - Horizontal Control Station
 - Permanent Lookout Station
 - Horizontal Control Station and Permanent Lookout Station
 - Locality or Landmark Object
 - Mine, Quarry, or Gravel Pit
 - Building, Church, School, Cemetery
 - Campground, National Forest
 - Campground, other than National Forest
 - Florida Area, National Forest
 - Florida Area, other than National Forest
 - Hiking Trail
 - Interpretive Trail
 - Trailhead Parking
 - Cross Country Ski Area
 - Downhill Ski Area



FOREST SERVICE
Compiled at the Regional Office, Milwaukee, Wisconsin, 1974 from
U.S. Geological Survey quadrangles. Revised in 1992 by the USDA
Forest Service, Geospatial Service Center, Salt Lake City, Utah,
from 1991 correction guides.

Longitude west from Greenwich 07°30' 73°00' 52°30' 72°45' 1927 North American datum