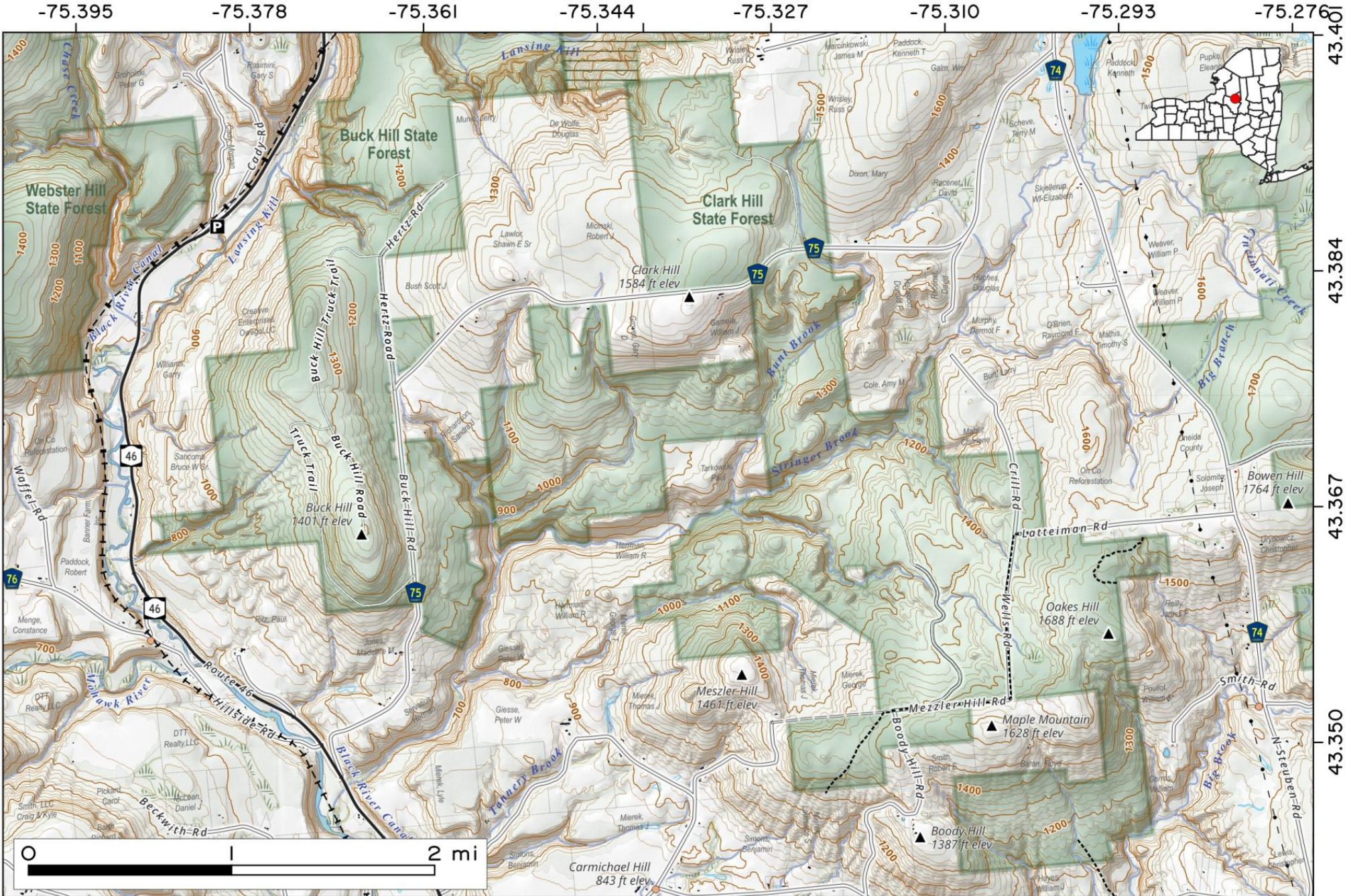


Clark Hill State Forest spans 2,819 acres, purchased between 1933-1950. Formerly pasture and cropland, it features hilly, rocky terrain, streams, and scenic views. Includes tranquil woodlands and gorges. Only Buck Hill Road is fully plowed in winter. Latteiman and Body Hill Roads are partially plowed.



Map created by Andy Arthur on 11/7/2025 in QGIS 3.44.4-Solothurn. Contains NYS GIS and DEC data with additional campsites added by Andy. More maps at andyarthur.org.



Clark Hill State Forest spans 2,819 acres, purchased between 1933-1950. Formerly pasture and cropland, it features hilly, rocky terrain, streams, and scenic views. Includes tranquil woodlands and gorges. Only Buck Hill Road is fully plowed in winter. Latteiman and Body Hill Roads are partially plowed.



Map created by Andy Arthur on 11/7/2025 in QGIS 3.44.4-Solothurn. Contains NYS GIS and DEC data with additional campsites added by Andy. More maps at andyarthur.org.

