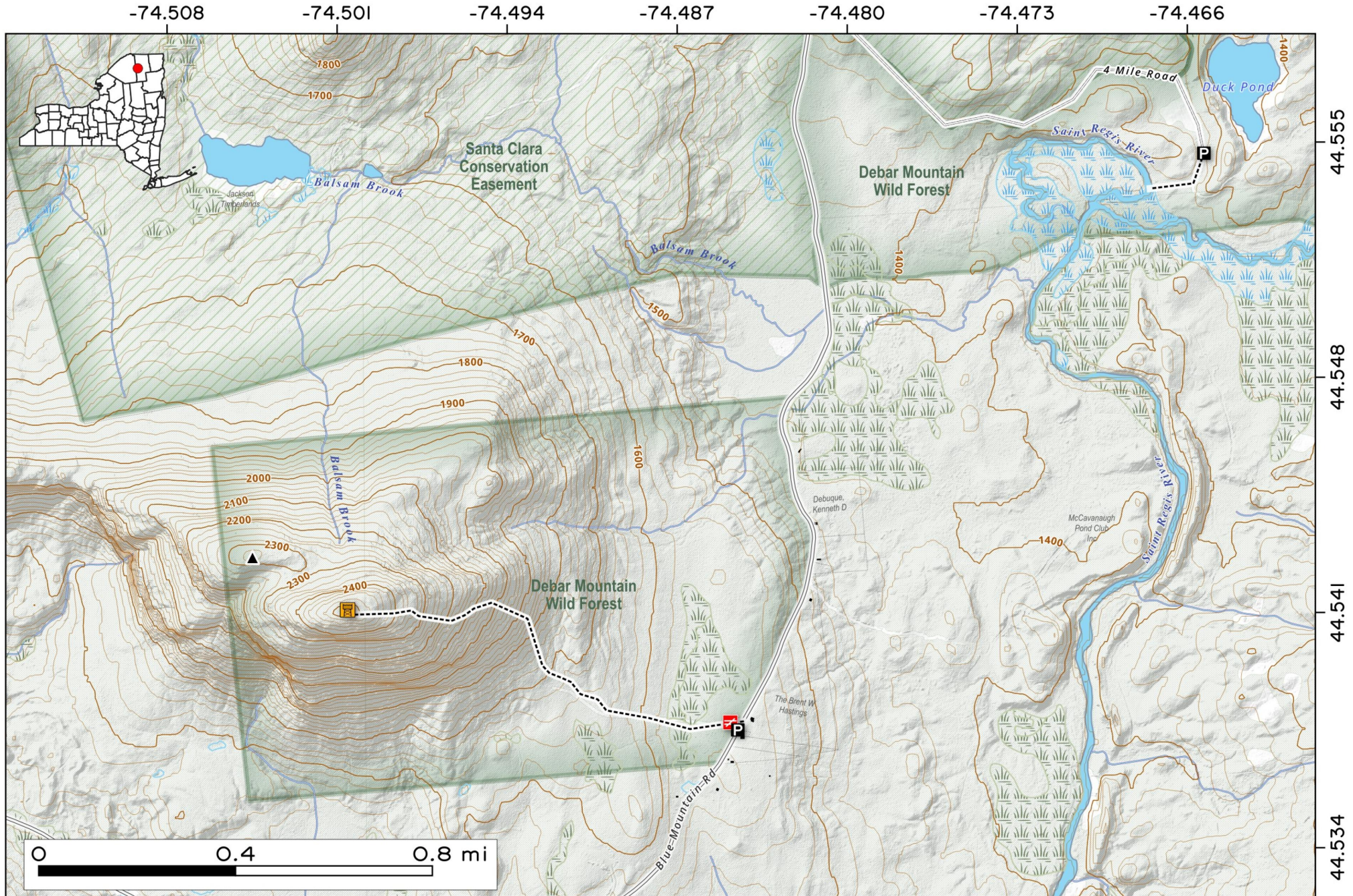


Azure Mountain is a two-mile round-trip hike with a one-mile ascent. Rising nearly 1,000 feet through hardwood forests, the path is steep and rocky. The summit features a restored 1918 fire tower, rewarding hikers with breathtaking 360-degree views.



Map created by Andy Arthur on 1/16/2026 in QGIS 3.44.6-Solothurn. Contains NYS GIS and DEC data with additional campsites added by Andy. More maps at andyarthur.org.

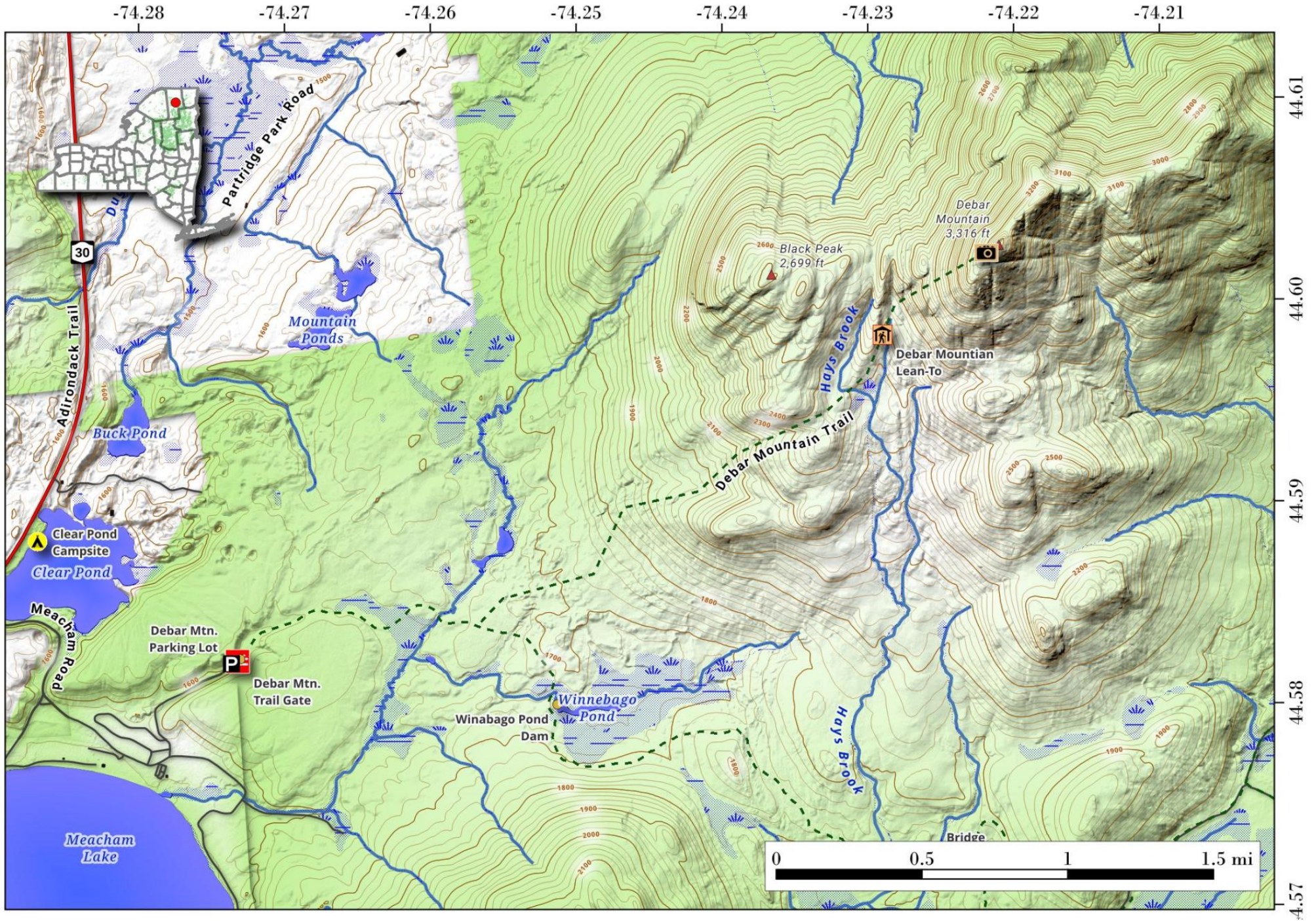


Debar Mountain Trail.

4.1 mile trail that follows an old logging road from Meacham Lake Campground to a trail that leads to the open summit of Debar Mountain.

Map created by Andy Arthur on 6/28/2024 in QGIS 3.34.7-Prizren.

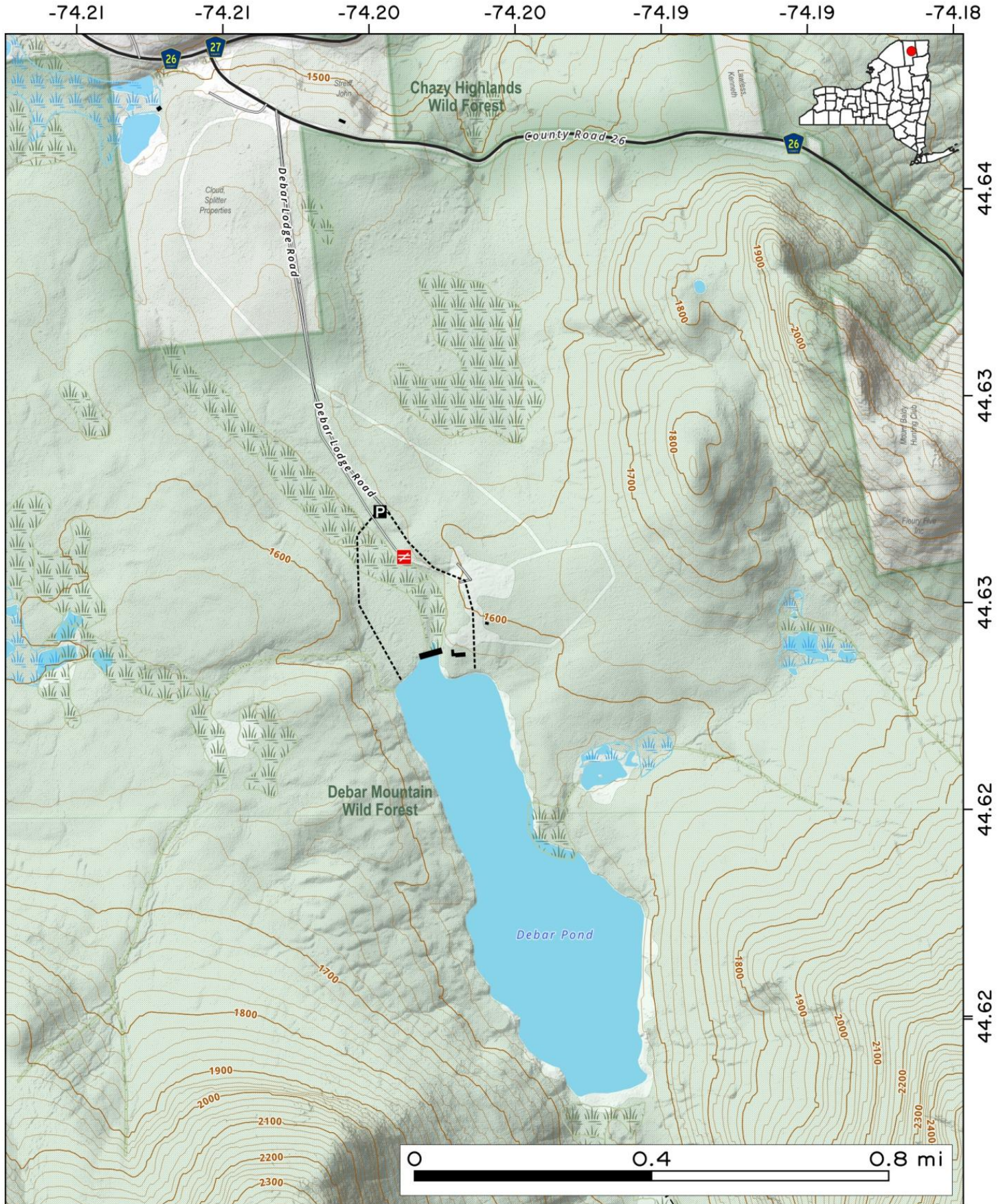
Contains DEC Trails/Assets, Additional Campsites/Trails by Andy other data ©OpenStreetMap Data, OSM Maintainers. More maps at andyarthur.org.



Debar Pond is a serene glacial lake nestled between Debar and Baldface Mountains, offers invitingly cool waters year-round. Paddlers are drawn to its tranquil surface and the allure of exploring its 86 acres, named after Canadian trapper John Debar who found it in discovered it in 1817.

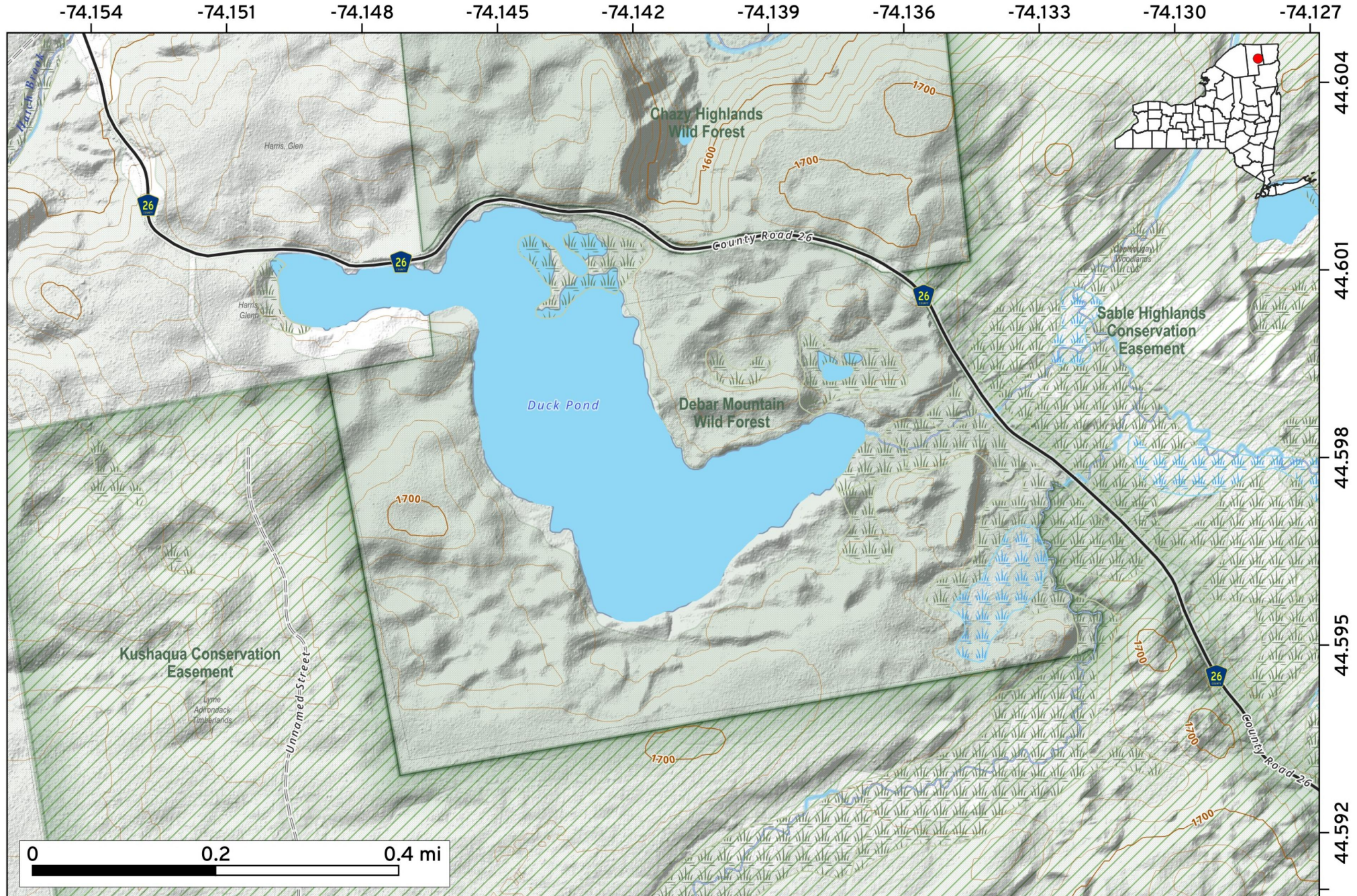


Map created by Andy Arthur on 10/27/2025 in QGIS 3.44.3-Solothurn. Contains NYS GIS and DEC data with additional campsites added by Andy. More maps at andyarthur.org.



Duck Pond. Remote 68 acre along Port Kent-Hopkin Turnpike (County Route 26) about 4 miles north-west of Loon Lake, and 5 miles south-west of Debar Pond.

Map created by Andy Arthur on 3/11/2026 in QGIS 3.44.7-Solothurn. Data: NYS GIS and NYS DEC. More at andyarthur.org.

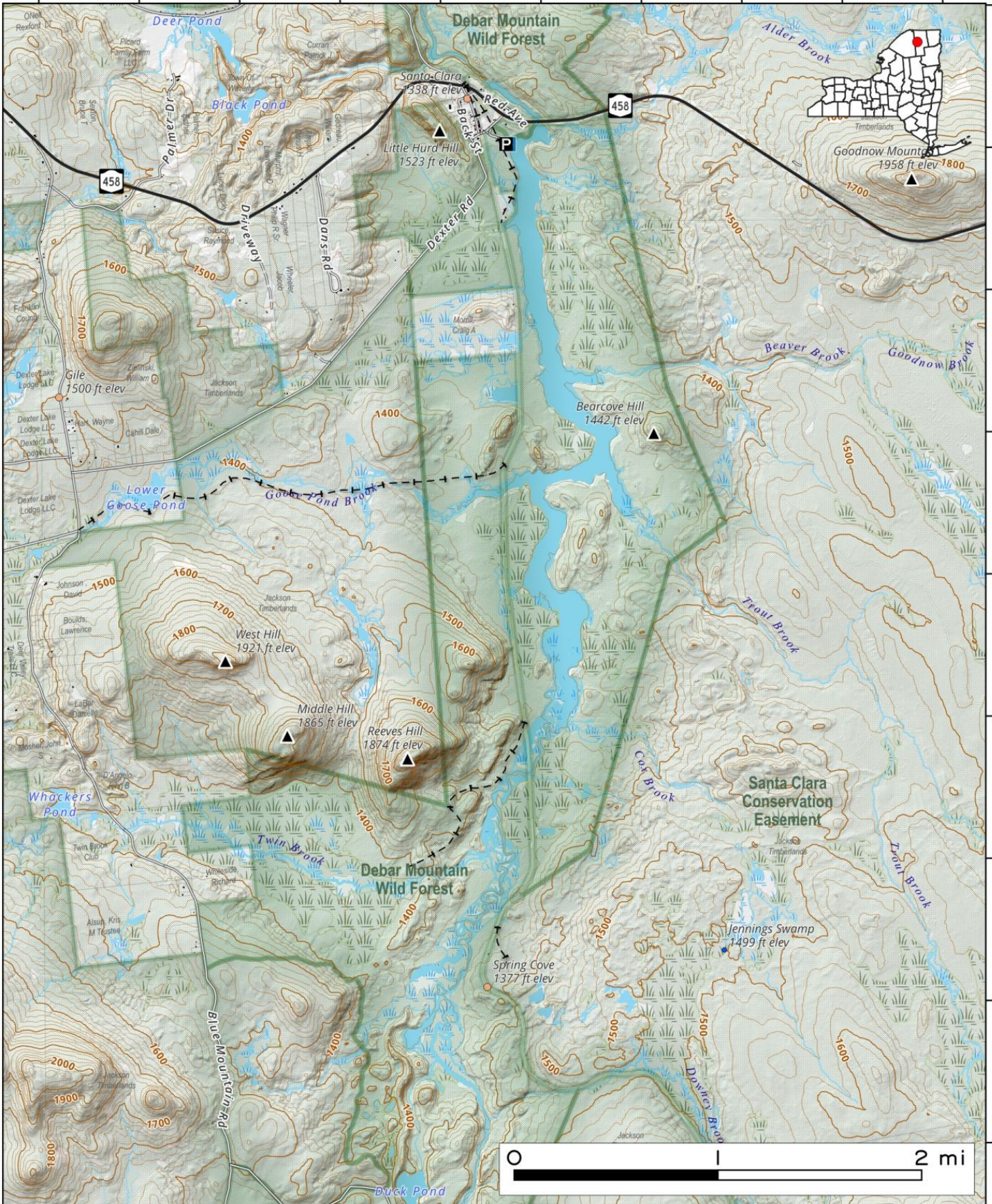


The **Santa Clara Flow** is a remote, marshy waterway located within the Adirondack Park in northern New York, connecting the St. Regis and Madawaska rivers. The flow provides a picturesque backcountry paddling destination, known for its scenic views. It is an ecologically significant area, attracting paddlers and nature enthusiasts. Access is sometimes limited, with conditions varying based on conservation easements and logging activity.

Map created by Andy Arthur on 10/22/2025 in QGIS 3.44.3-Solothurn. Contains NYS GIS and DEC data with additional campsites added by Andy. More maps at andyarthur.org.



-74.50 -74.49 -74.48 -74.47 -74.46 -74.45 -74.44 -74.43 -74.42 -74.41 44.64



44.64
44.63
44.62
44.61
44.60
44.59
44.58
44.57
44.56

