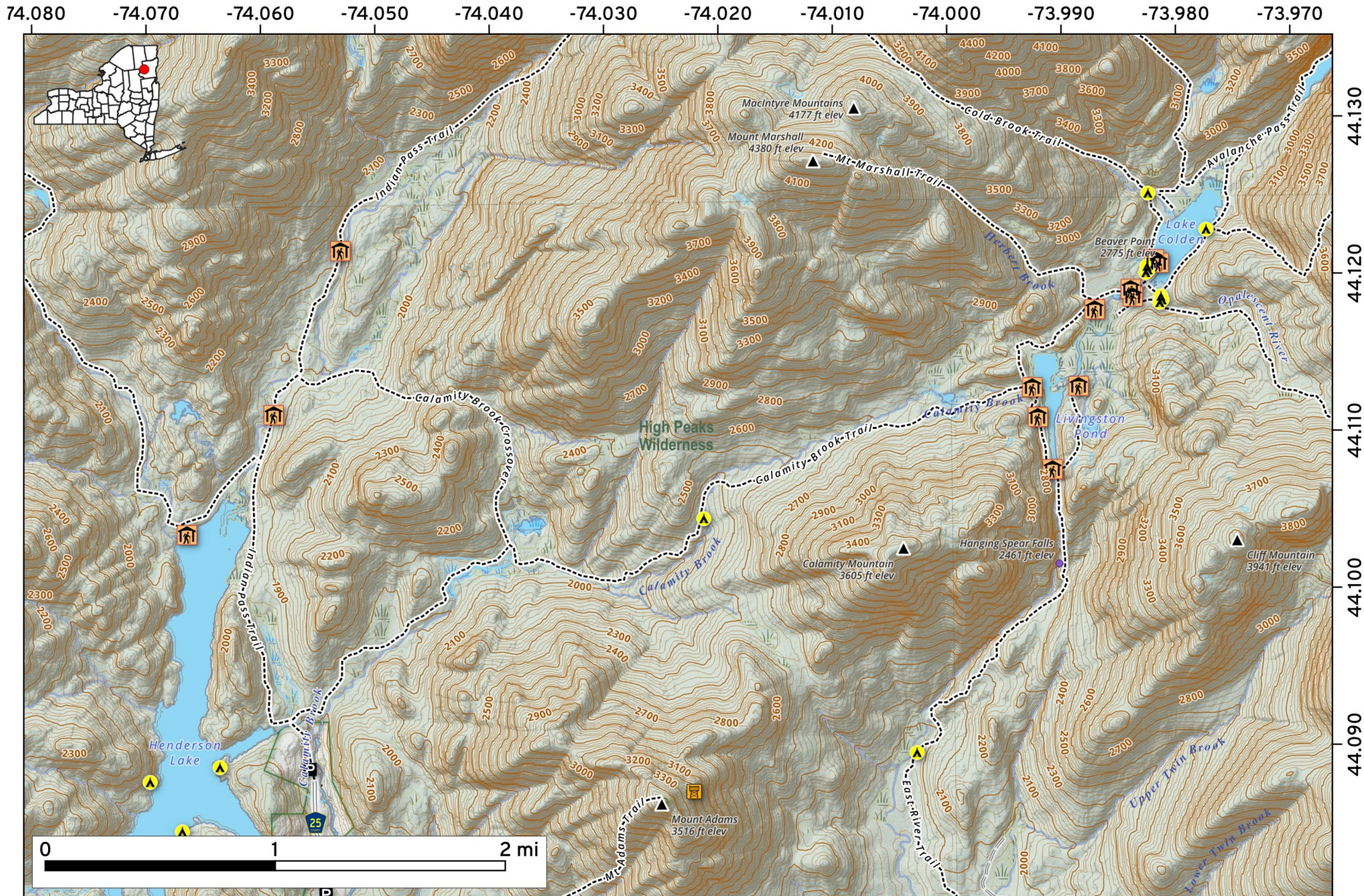


Calamity Brook Trail. The 11.2-mile out-and-back trail from Upper Works offers a gradual, scenic ascent. Hikers follow Calamity Brook past the historic Henderson Monument and serene Flowed Lands. The path features typical Adirondack roots, mud, and rocks, concluding with dramatic High Peak views at Lake Colden. Terry Mountain State Forest the 4,739-acre forest includes two remote fishing ponds, Military Pond and Mud Pond, and a short hike to a summit area with views of Lake Champlain.

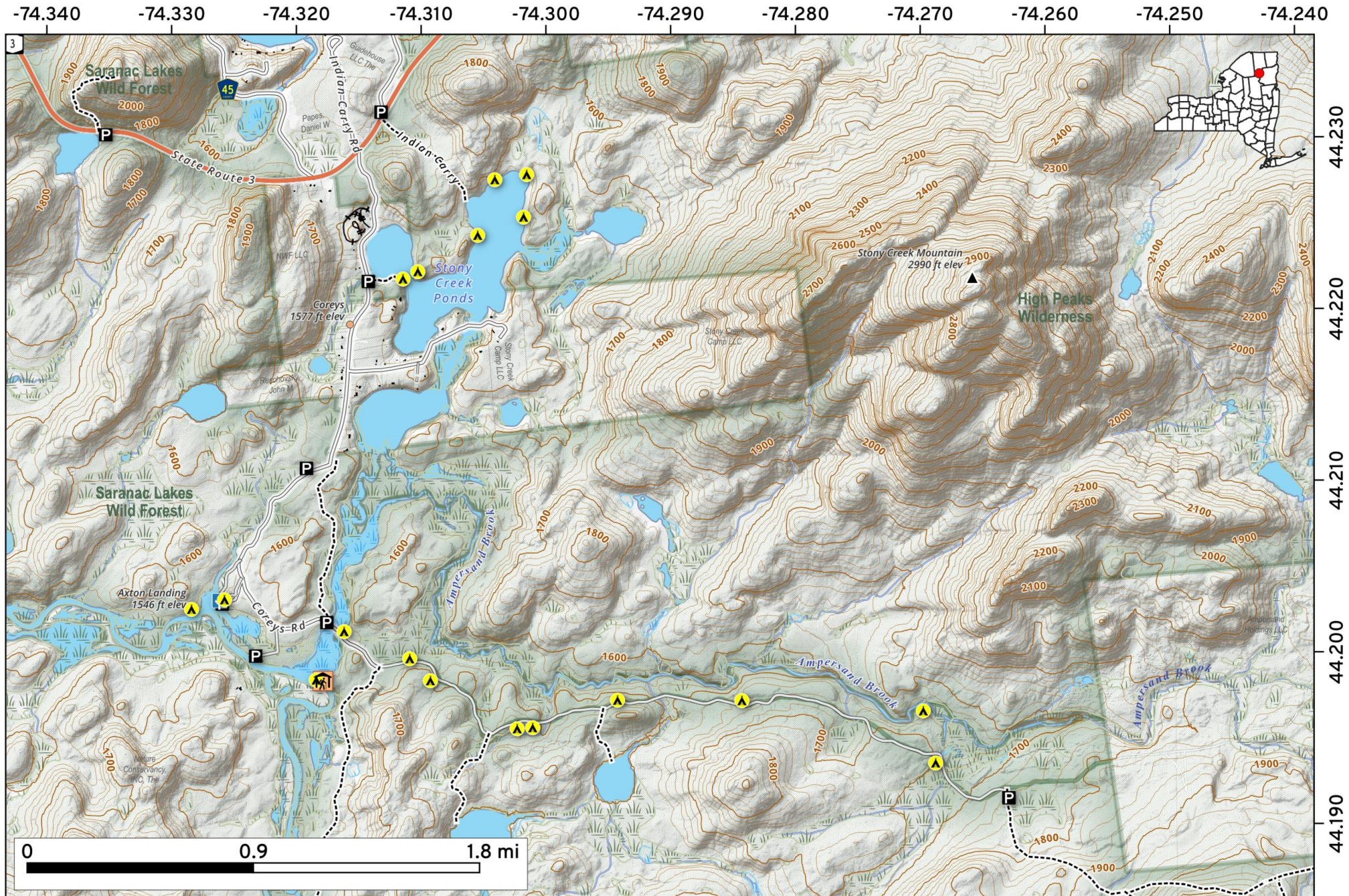


Map created by Andy Arthur on 2/4/2026 in QGIS 3.44.7-Solothurn. Data: NYS GIS and NYS DEC. More at andyarthur.org.



Corey's Road Campsites. Roadside campsites near Axton Landing off of NY 3 between Tupper Lake and Saranac Lake.

Map created by Andy Arthur on 1/23/2026 in QGIS 3.44.6-Solothurn. Data: NYS GIS and NYS DEC. More at andyarthur.org.



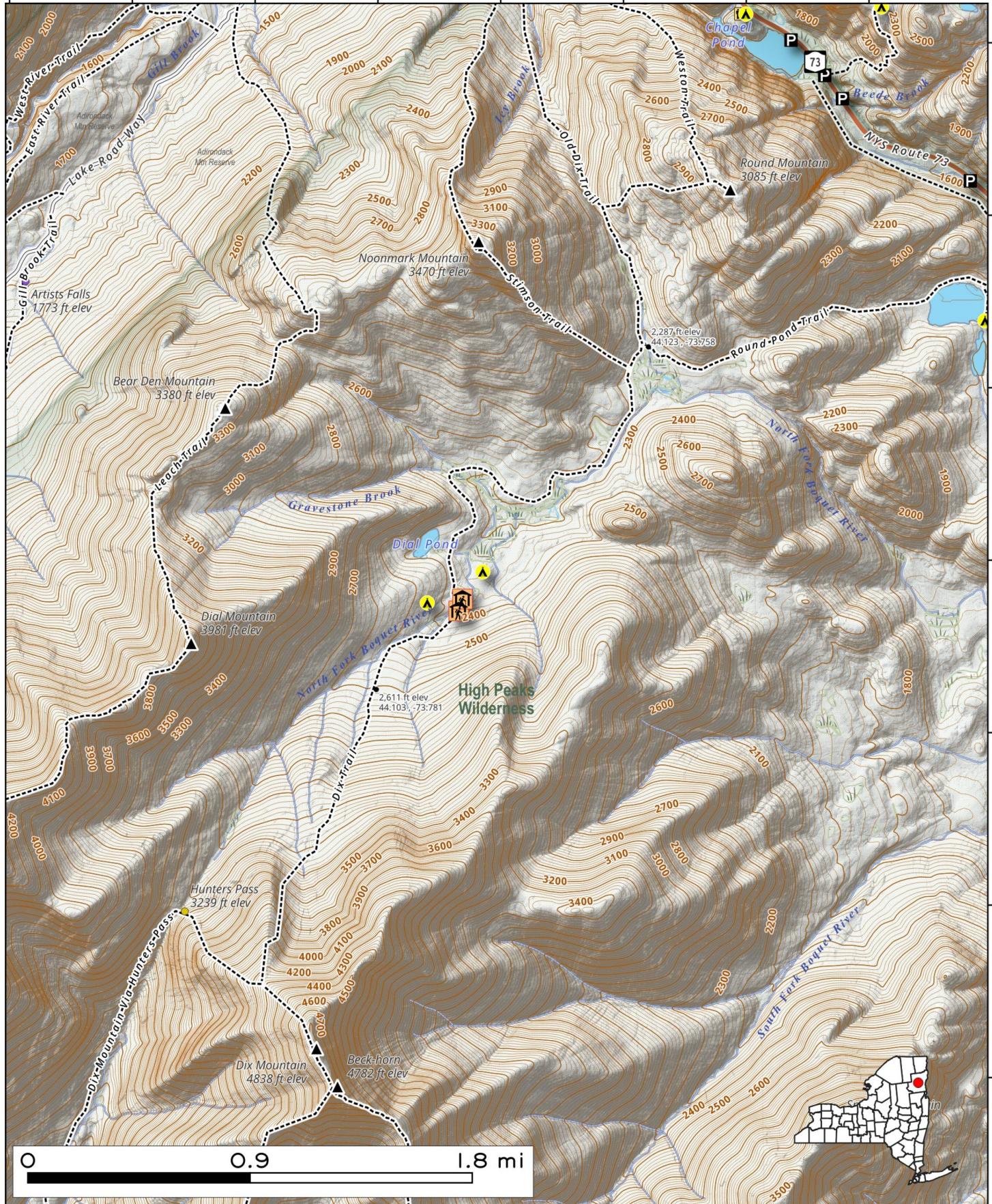
Dix Mountain Trail. 13.2-mile out-and-back trail in the Adirondacks High Peaks Region.

Map shows campsites, lean-tos and coordinates for key locations.

Map created by Andy Arthur on 12/22/2025 in QGIS 3.44.5-Solothurn. Contains NYS GIS and DEC data with additional campsites added by Andy. More maps at andyarthur.org.



-73.81 -73.80 -73.79 -73.78 -73.77 -73.76 -73.75 -73.74



44.14
44.13
44.12
44.11
44.10
44.09
44.08

0 0.9 1.8 mi

Elk Lake to Dix Mountain Trail. Dix Mountain is located 5 1/2 miles back from Elk Lake via the Elk Lake - Dix Mountain and Beckhorn Trails. There are two camping areas located at the one mile and two mile points north of Elk Lake, along with trail sto Hough Peak, Macomb Mountain and Grace Peak.

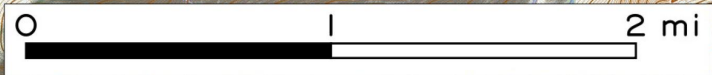


Map created by Andy Arthur on 12/29/2025 in QGIS 3.44.5-Solothurn. Contains NYS GIS and DEC data with additional campsites added by Andy. More maps at andyarthur.org.

-73.84 -73.83 -73.82 -73.81 -73.80 -73.79 -73.78 -73.77 -73.76

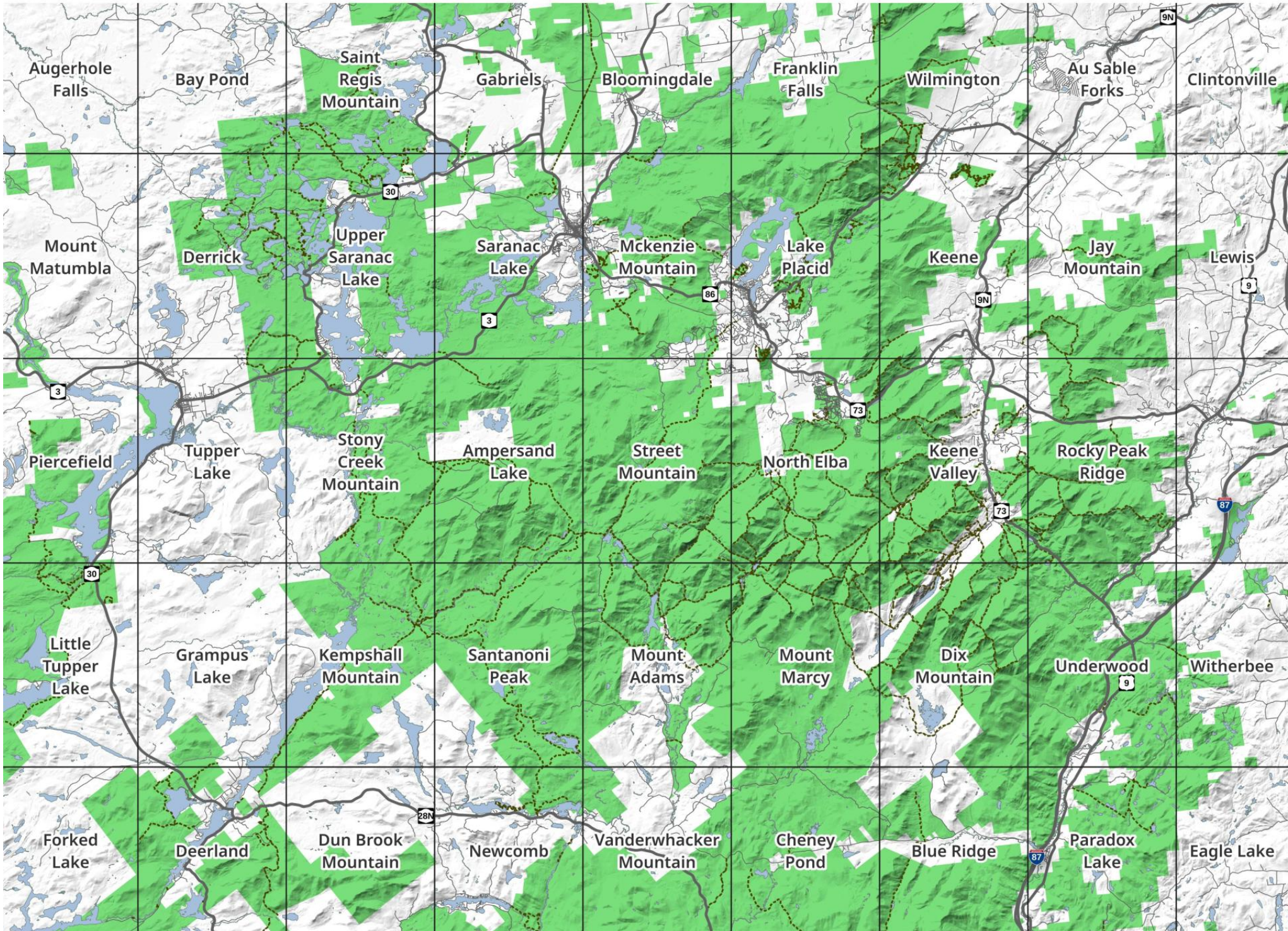


44.09
44.08
44.07
44.06
44.05
44.04
44.03
44.02



High Peaks Region - USGS 1:24k Topographic Map Index

Download Free USGS Topographic Maps Here: <https://tinyurl.com/nyusgstopo>
Map by Andy Arthur, October 17, 2023

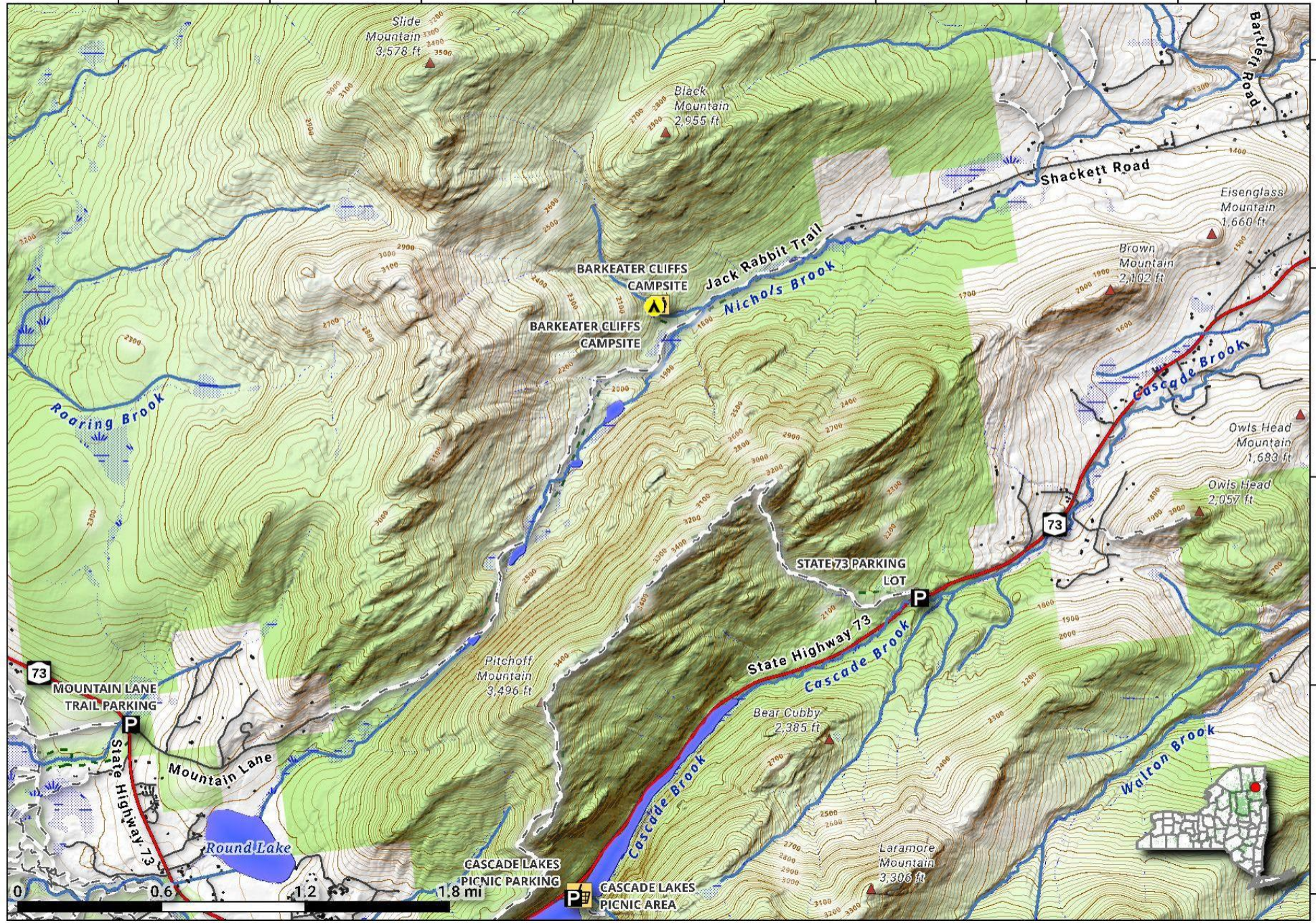


Jack Rabbit Trail. 7.7-mile out-and-back trail runs from Mountain Lane in Lake Placid to Shackett Road in Keene through a deep notch on back side of Pitchoff.

Map created by Andy Arthur on 6/10/2024 in QGIS 3.34.7-Prizren. Contains DEC Trails/Assets, Additional Campsites/Trails by Andy other data ©OpenStreetMap Data, OSM Maintainers. More maps at andyarthur.org.



-73.91 -73.90 -73.89 -73.87 -73.86 -73.85 -73.84 -73.82



44.28
44.26
44.25
44.24
44.23

Stoney Creek Pond is off Corey's Road outside of Tupper Lake. Partially developed, there is the Indian Carry (1/2 mile long) or Stoney Pond Trail (1/4 mile long) access to the pond.

Map created by Andy Arthur on 9/29/2025 in QGIS 3.44.3-Solothurn. Contains US Forest Service Base Map, NYS DEC data with additional campsites added by Andy. More maps at andyarthur.org.

