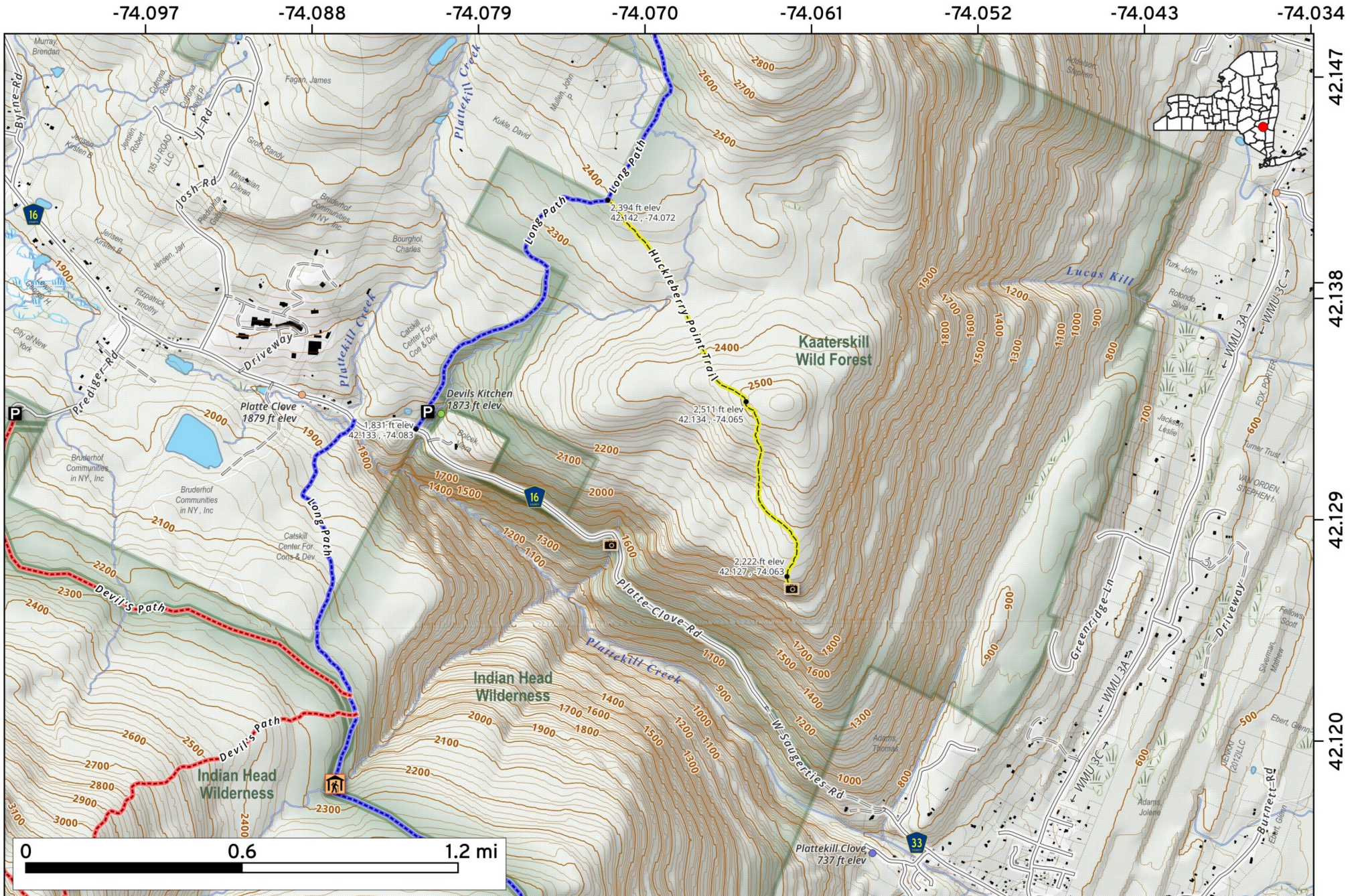


Huckleberry Point Trail overlooks the Platte Clove Road. Access from the Platte Clove above the seasonal use gate. A 4½ mile that hike with a modest elevation change that takes roughly 3 years.

Map created by Andy Arthur on 1/27/2026 in QGIS 3.44.6-Solothurn. Data: NYS GIS and NYS DEC. More at andyarthur.org.

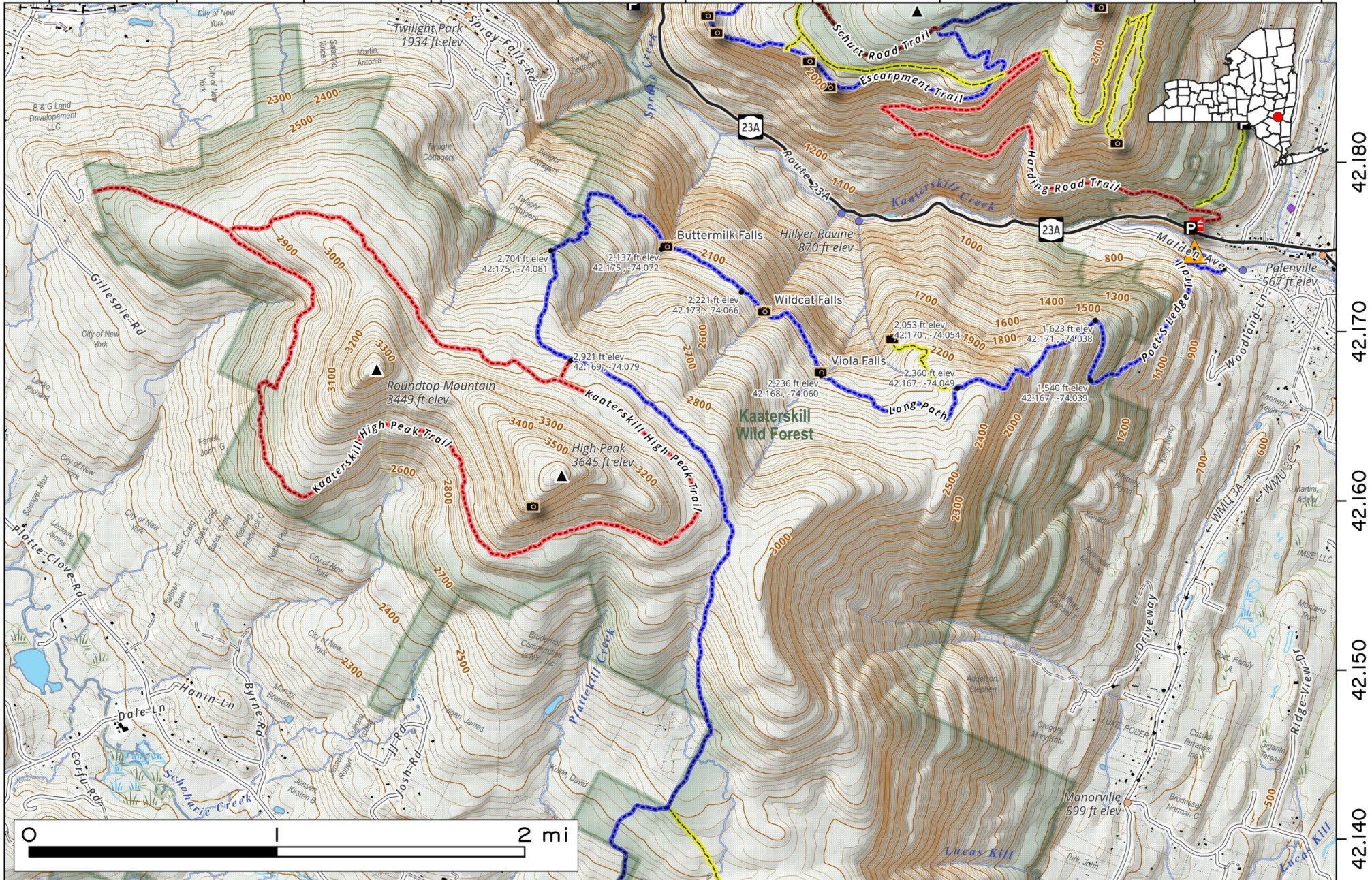


Kaaterskill High Peak - Roundtop Mountain. Snowmobile trails, waterfalls passed by the Long Path up on mountains southwest of Palenville.

Map created by Andy Arthur on 1/1/2026 in QGIS 3.44.6-Solothurn. Contains NYS GIS and DEC data with additional campsites added by Andy. More maps at andyarthur.org.



-74.120 -74.110 -74.100 -74.090 -74.080 -74.070 -74.060 -74.050 -74.040 -74.030 -74.020



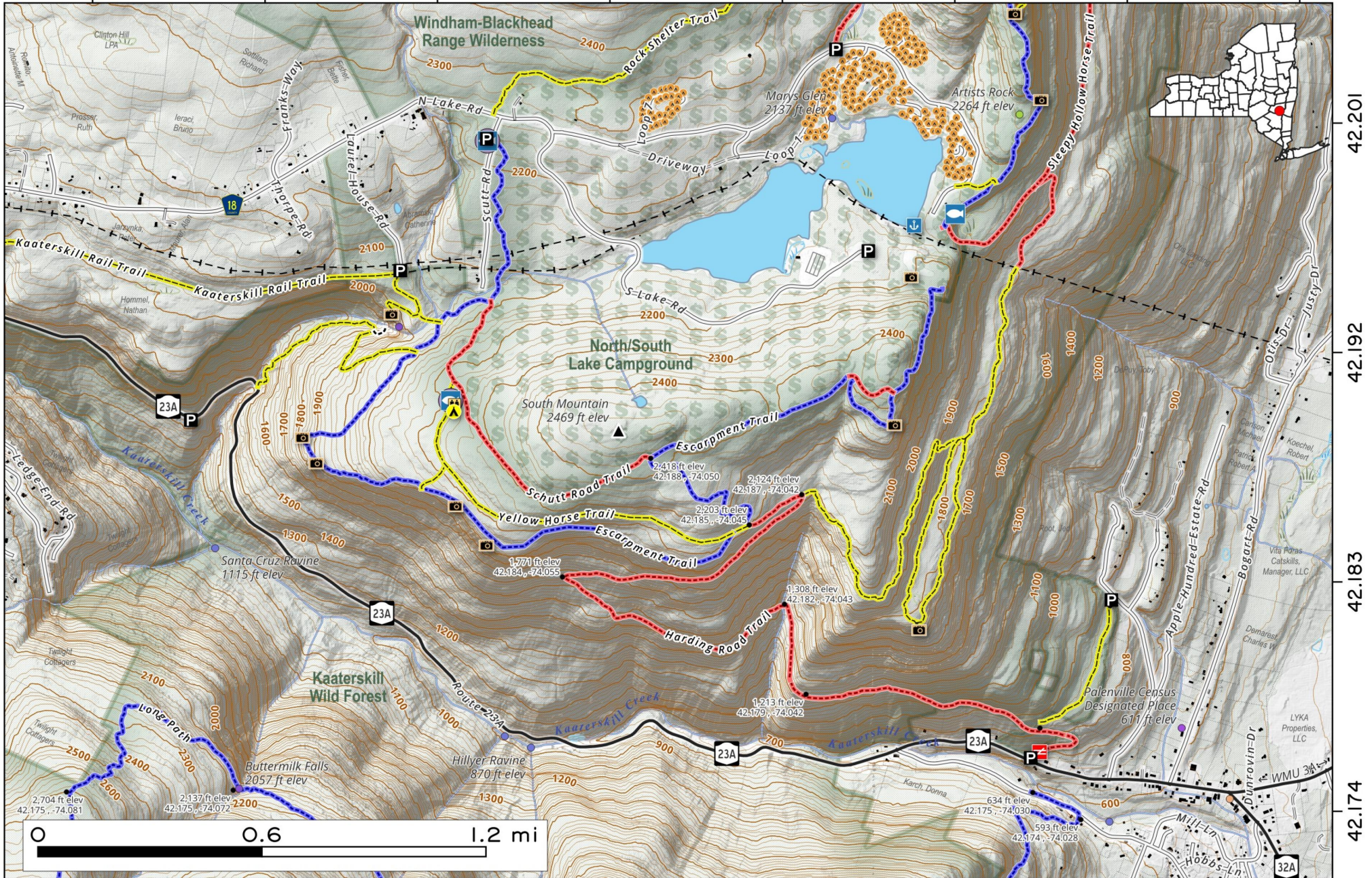
42.180
42.170
42.160
42.150
42.140

North South Lake Campground - Trails Along Kaaterskill Clove and along the south of the campground, including the Escarpment Trail, Yellow Horse Trail, Sleepy Hollow Horse Trail and Kaaterskill Falls Trail.

Map created by Andy Arthur on 1/21/2026 in QGIS 3.44.6-Solothurn. Contains NYS GIS and DEC data with additional campsites added by Andy. More maps at andyarthur.org.



-74.079 -74.070 -74.061 -74.052 -74.043 -74.034 -74.025 -74.016



42.201

42.192

42.183

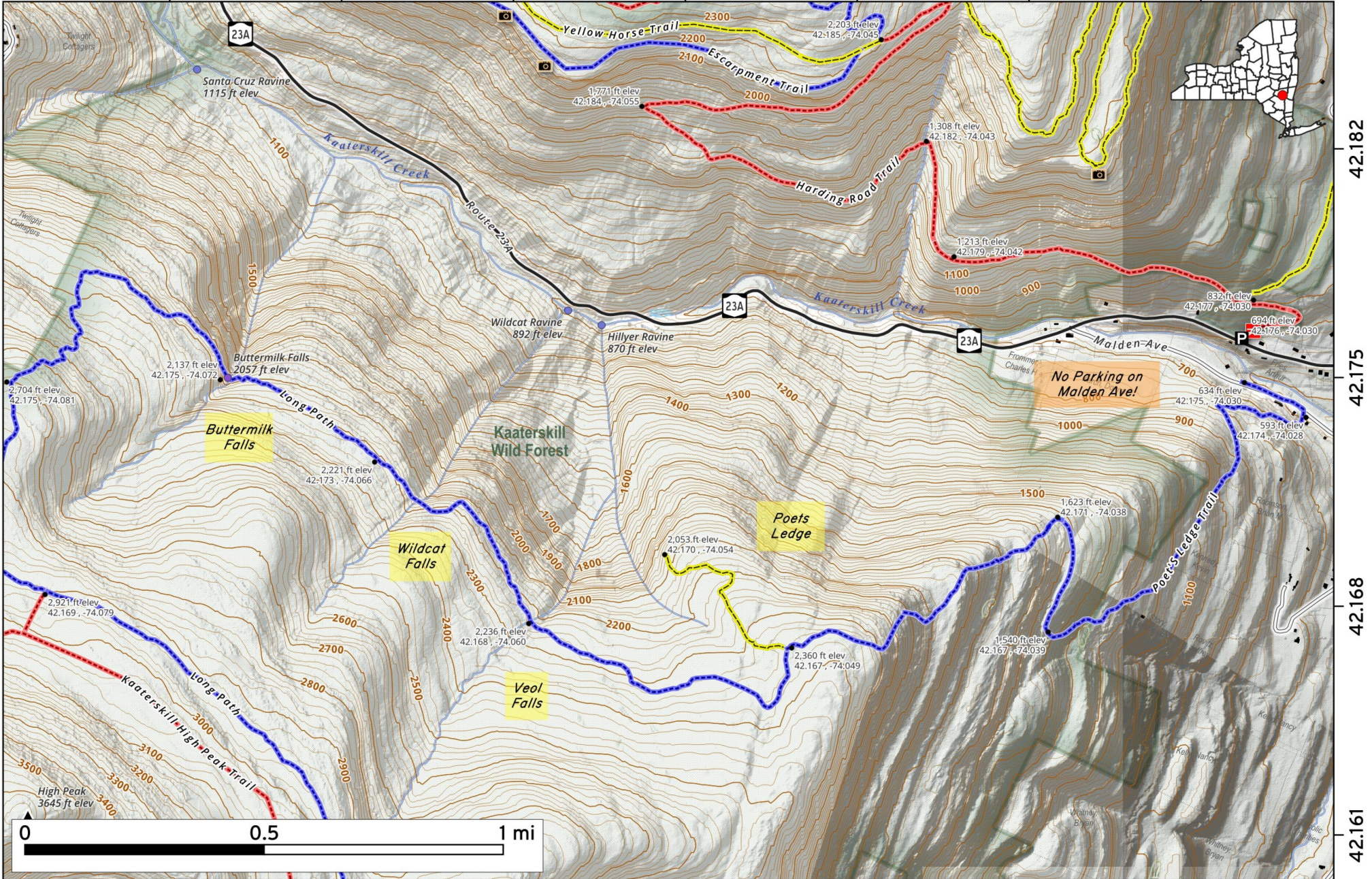
42.174

Poet's Ledge Trail - Buttermilk, Wildcat, Veola Falls Scenic vistas with a 10 mile, all day 8 hour hike from parking on NY 23A. 1,650 ft elevation gain.

Map created by Andy Arthur on 1/27/2026 in QGIS 3.44.6-Solothurn. Data: NYS GIS and NYS DEC. More at andyarthur.org.

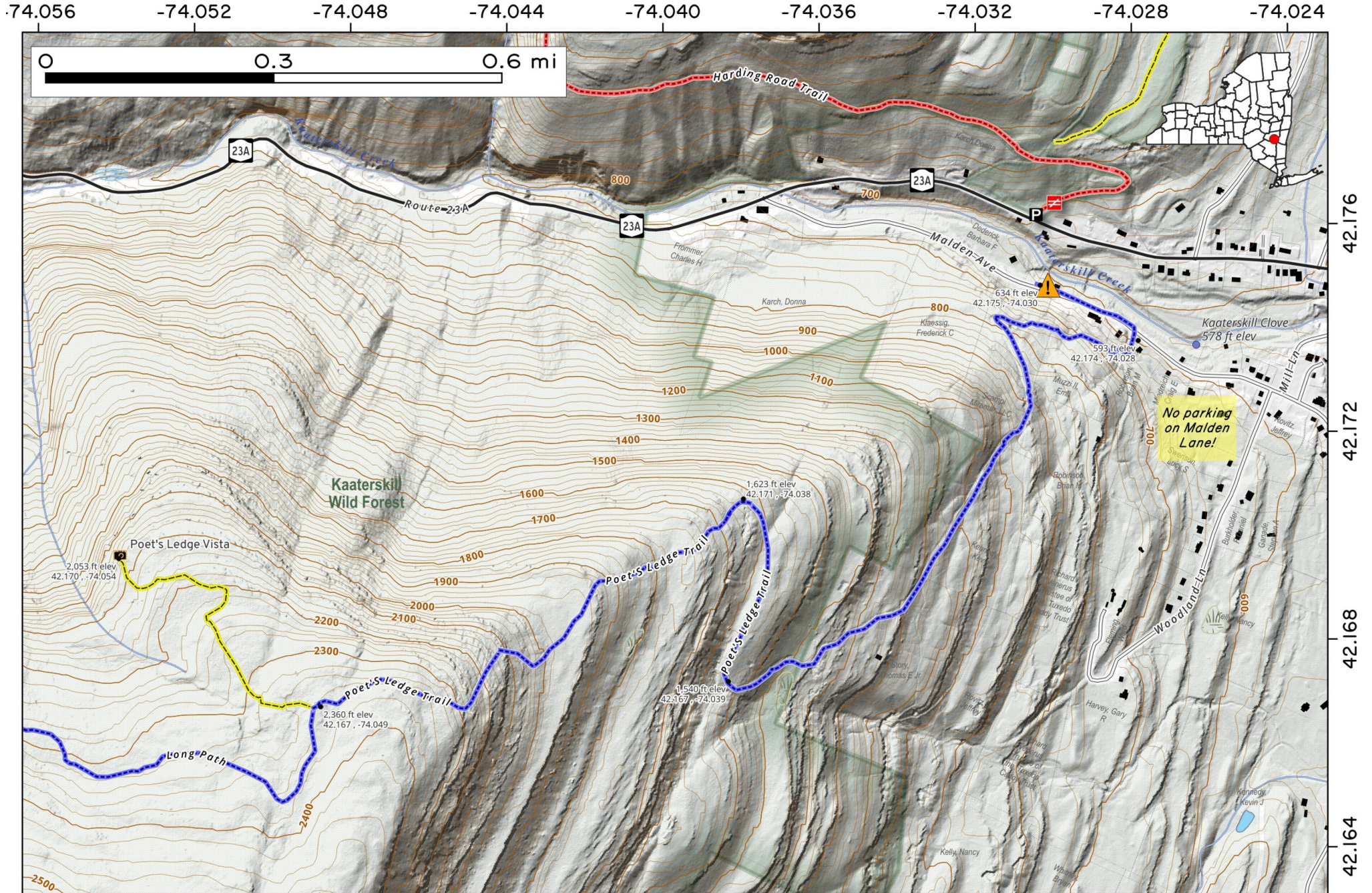


-74.074 -74.067 -74.060 -74.053 -74.046 -74.039 -74.032



Poet's Ledge Trail. Overlook above the Kaaterskill Cove looking north outside of Palenville.

Map created by Andy Arthur on 1/6/2026 in QGIS 3.44.6-Solothurn. Contains NYS GIS and DEC data with additional campsites added by Andy. More maps at andyarthur.org.



Poets Ledge - Buttermilk, Wildcat, Veola Falls. It is roughly 10 miles and 8 hour round trip from parking at White Road lot off NY 23A. Get there early, it fills up on nice days. Absolutely no parking on Maiden Ave. Take Maiden Avenue to the trail head, hike up roughly 2 miles for 1,500 feet elevation gain, then roughly 2 miles along the Long Path from the Poet Ledge Trail to Buttermilk Falls.



Map created by Andy Arthur on 12/12/2025 in QGIS 3.44.5-Solothurn. Contains NYS GIS and DEC data with additional campsites added by Andy. More maps at andyarthur.org.

