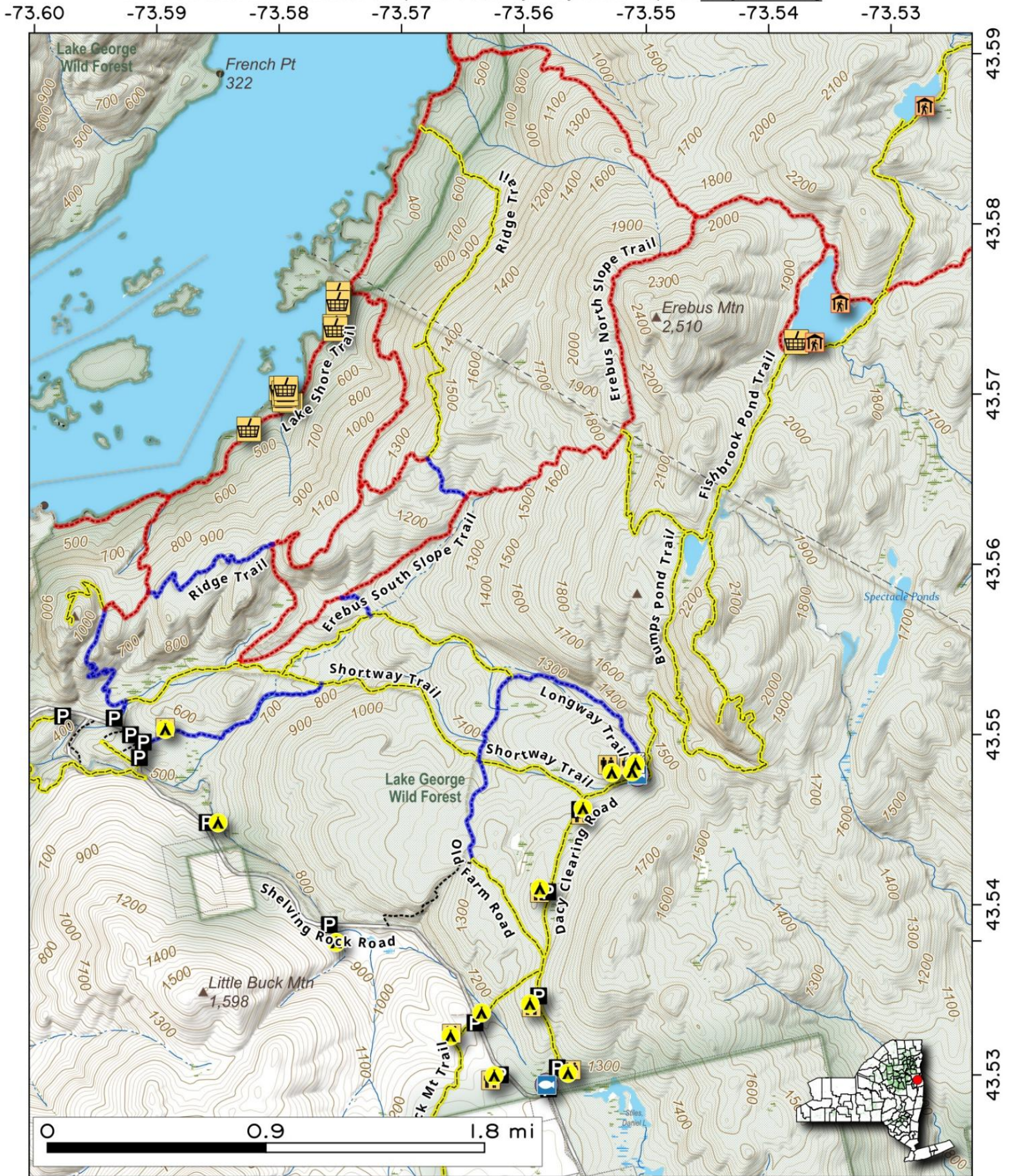


Fishbrook Pond is a 33-acre body of water accessible via trails around Dacy Clearing Road, featuring a lean-to and picnic area. The area offers stunning views and opportunities for outdoor activities. Nearby is Sleeping Beauty Mountain and several campsites. The trail to Fishbrook Pond is about 2.6 miles from Dacy Clearing with moderate difficulty.



Map created by Andy Arthur on 9/25/2025 in QGIS 3.44.2-Solothurn. Contains US Forest Service Base Map, NYS DEC data with additional campsites added by Andy. More maps at andyarthur.org.

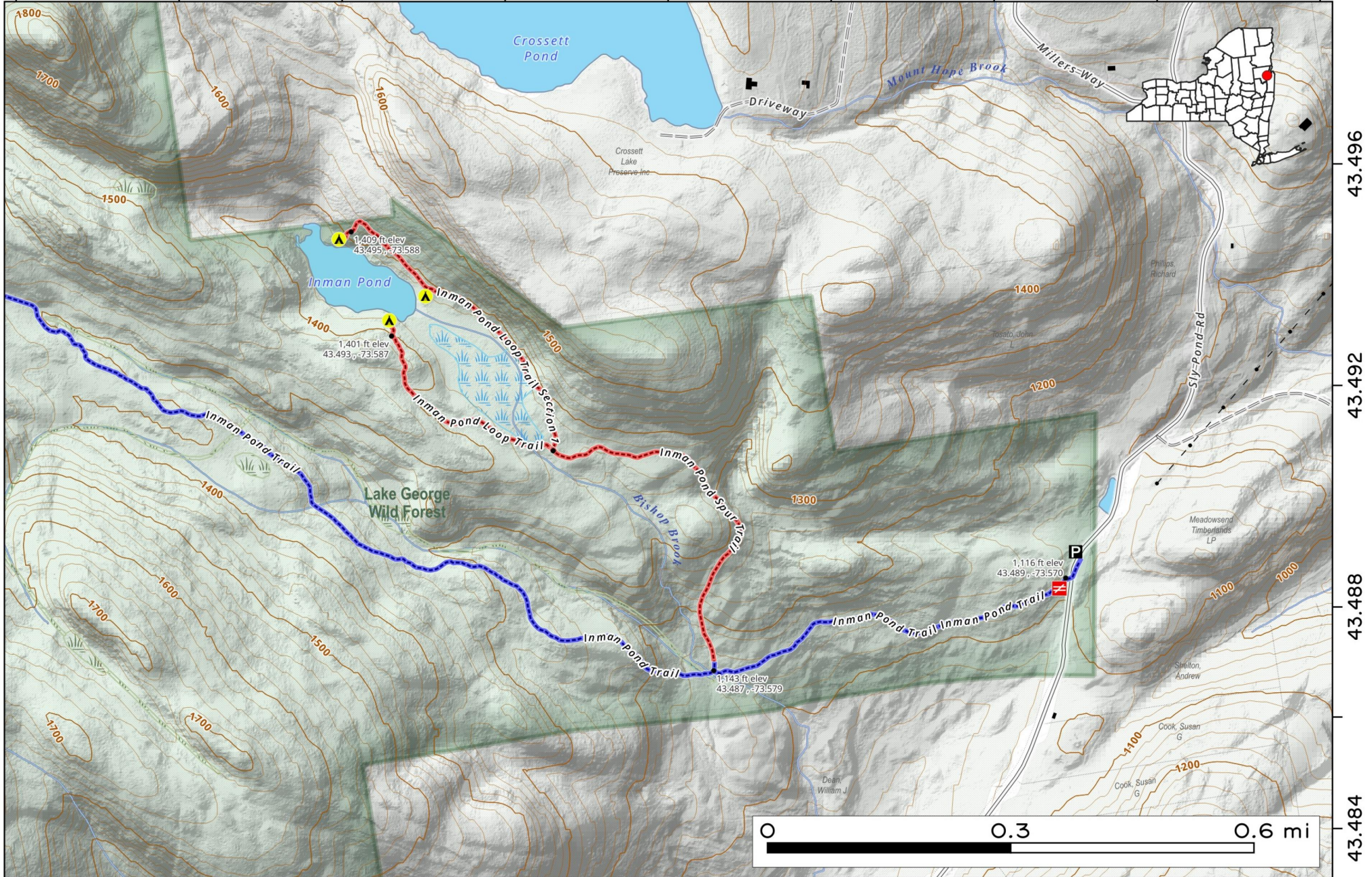


Inman Pond is a secluded, 5.2-acre pond located in the Lake George Wild Forest in Fort Ann, NY, a popular destination for hikers and anglers. It is accessible via an easy, family-friendly trail system and is annually stocked with brook trout. The surrounding area features wooded hills and is ideal for fishing, hiking, snowshoeing, and cross-country skiing.



Map created by Andy Arthur on 11/18/2025 in QGIS 3.44.4-Solothurn. Contains NYS GIS and DEC data with additional campsites added by Andy. More maps at andyarthur.org.

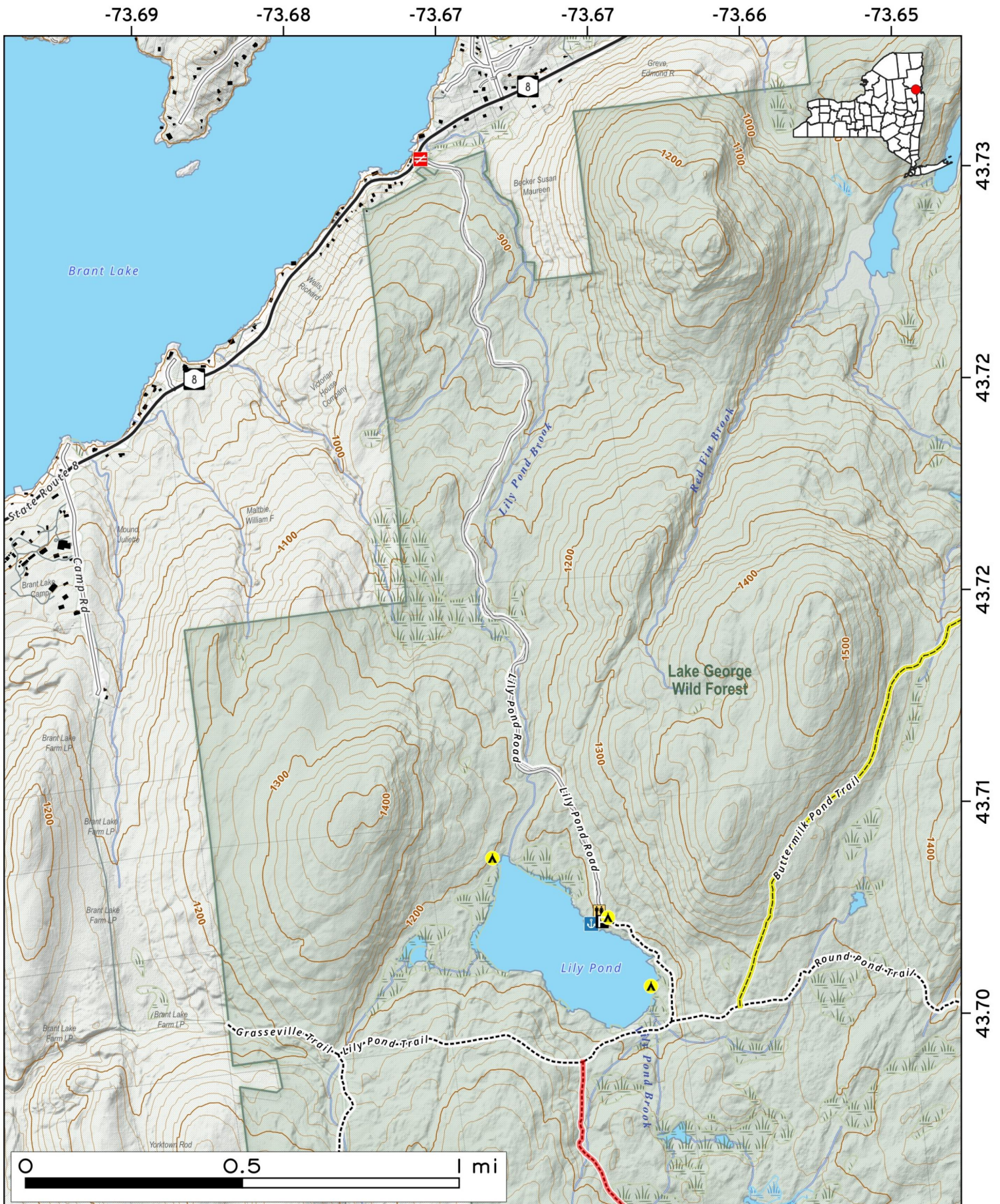
73.596 -73.592 -73.588 -73.584 -73.580 -73.576 -73.572 -73.568 -73.564



Lily Pond in Hague is located about 1/2 miles south of Brant Lake off of NY 8. Recently rebuilt by the state, this seasonal motor vehicle road leads to a remote Adironack Lake with a handful of campsites along its shoreline.



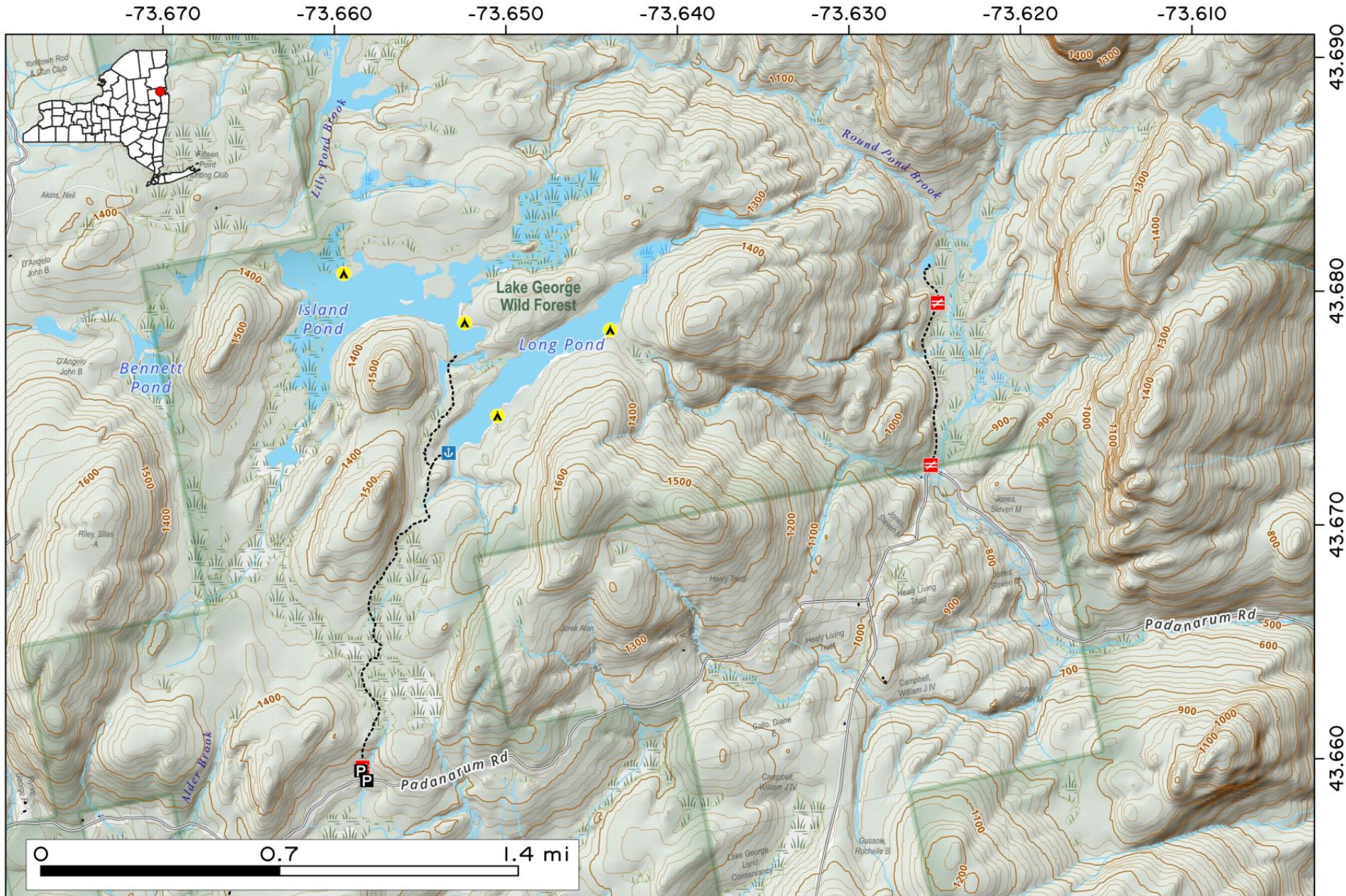
Map created by Andy Arthur on 2/10/2026 in QGIS 3.44.7-Solothurn. Data: NYS GIS and NYS DEC. More at andyarthur.org.



Long Pond Trail is located off of Pandanaram Road, a narrow dirt road located in Horicon. Long Pond is roughly 1 1/2 miles north of this road. Between Long Pond, Island Pond, and Little Long campsites in this remote part of the Adirondacks.



Map created by Andy Arthur on 10/9/2025 in QGIS 3.44.3-Solothurn. Contains NYS GIS and DEC data with additional campsites added by Andy. More maps at andyarthur.org.



Palmer Pond. Off NY 8 in Riparius, Palmer Pond is a former scout camp that has a road back to a trail around Palmer Pond that offers fishing and designated campsites.

Map created by Andy Arthur on 1/5/2026 in QGIS 3.44.6-Solothurn. Contains NYS GIS and DEC data with additional campsites added by Andy. More maps at andyarthur.org.



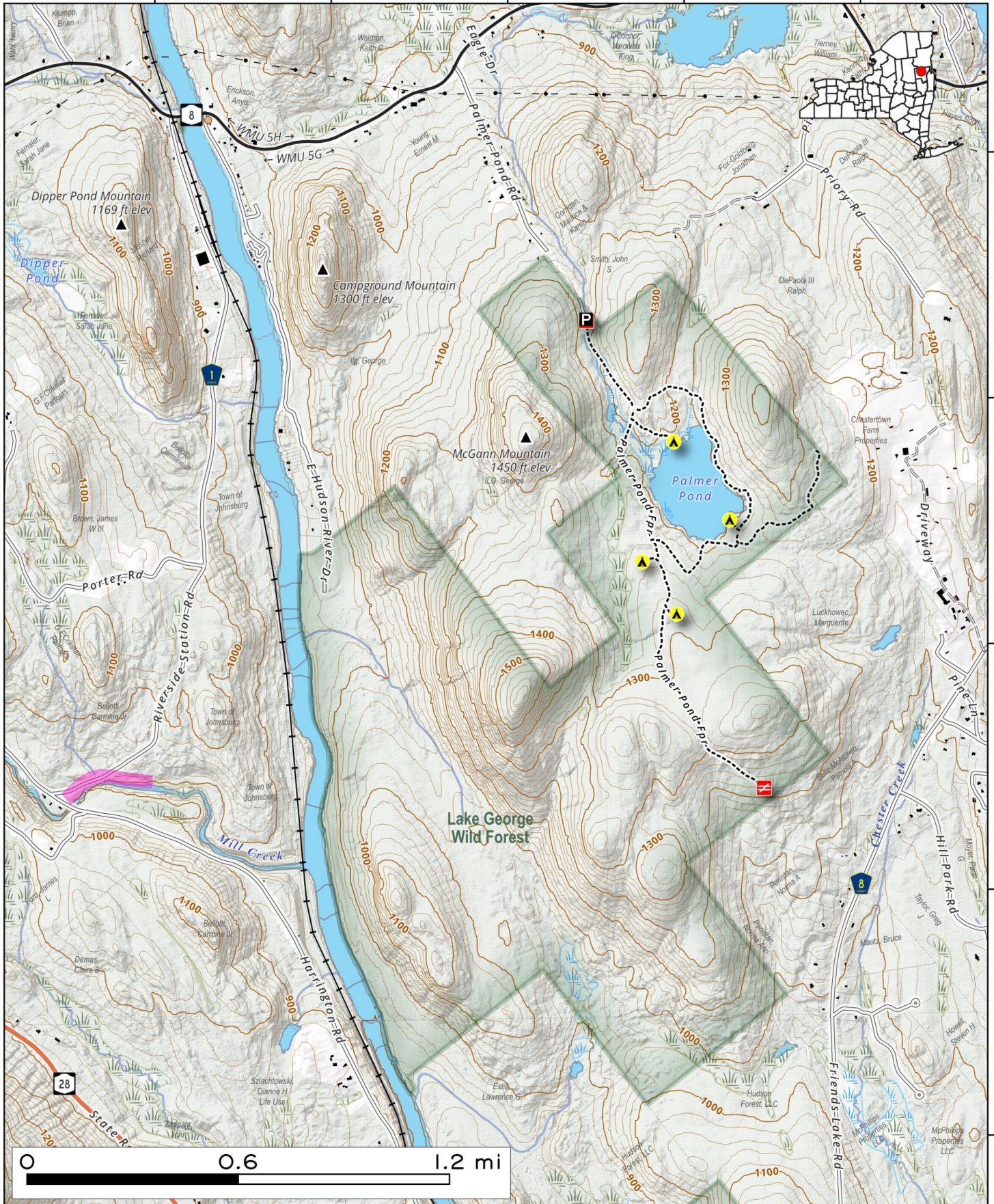
-73.90

-73.89

-73.88

-73.87

-73.86



0 0.6 1.2 mi

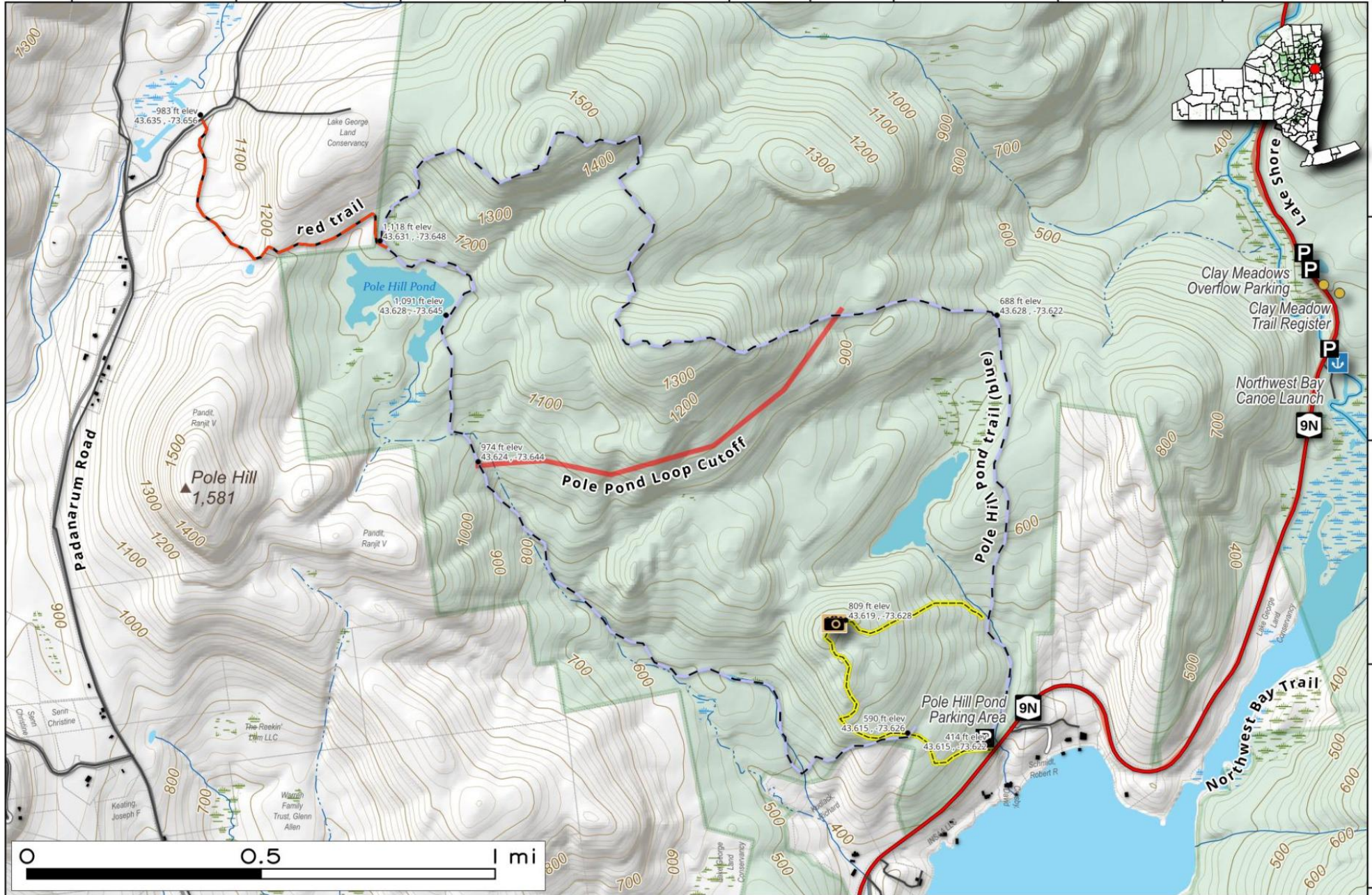
43.66
43.65
43.64
43.63
43.62

Pole Hill Pond Trail. Hiking and cross-country ski trail to the west of Tongue Mountain. The trail back to Poll Hill Pond is 2 miles long. The full loop is 6 miles, crossing several unnamed hills.

Map created by Andy Arthur on 6/3/2025 in QGIS 3.34.15-Prizren. Contains US Forest Service Base Map, NYS DEC data with additional campsites added by Andy. More maps at andyarthur.org.



-73.661 -73.654 -73.647 -73.640 -73.633 -73.626 -73.619 -73.612



43.631
43.624
43.617
43.610