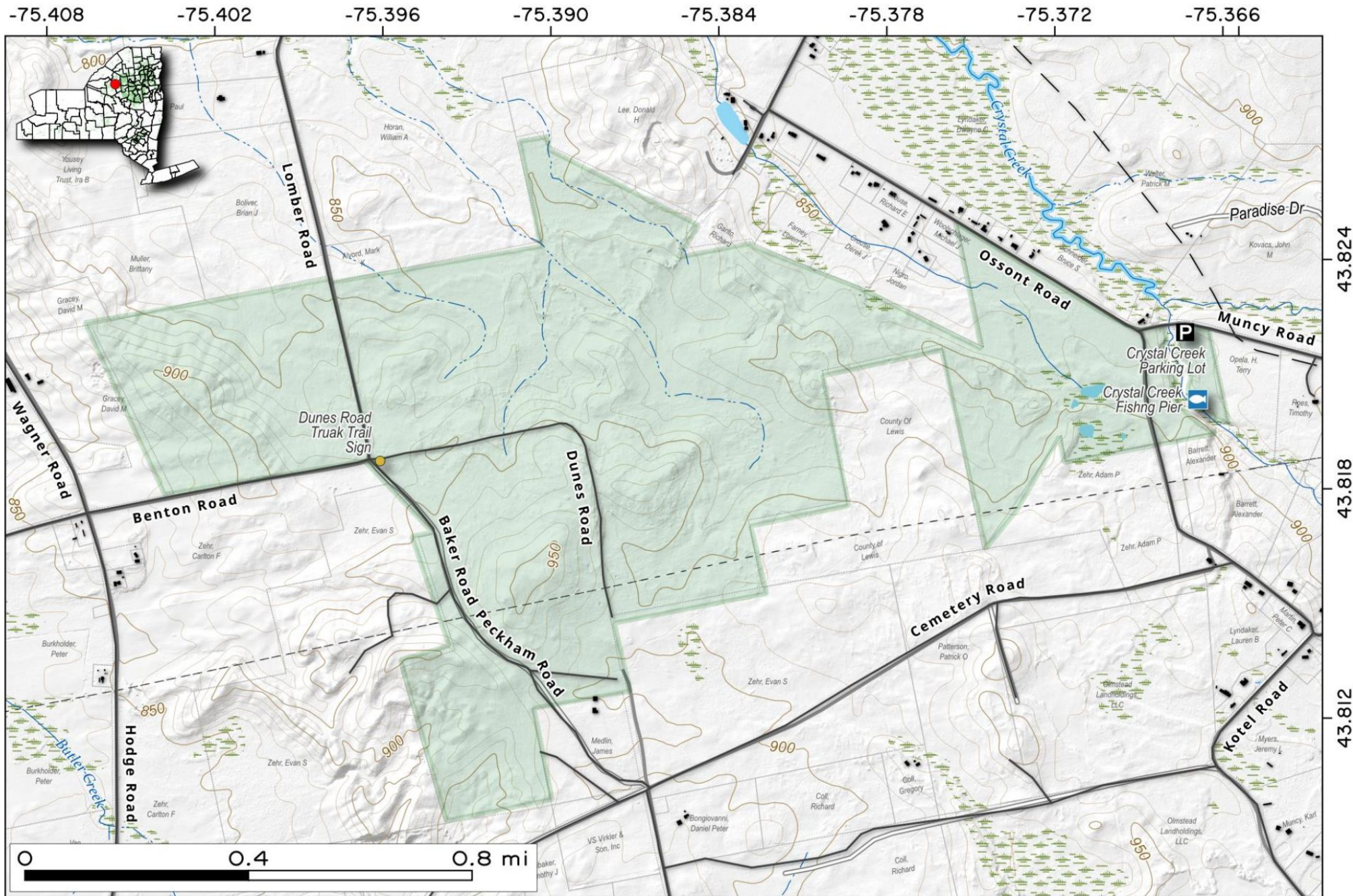


Indian Pipe State Forest.

Around 600 acres of state land east of New Bremen in Lewis County.

Map created by Andy Arthur on 5/16/2025 in QGIS 3.34.15-Prizren. Contains US Forest Service Base Map, NYS DEC data with additional campsites added by Andy. More maps at andyarthur.org.

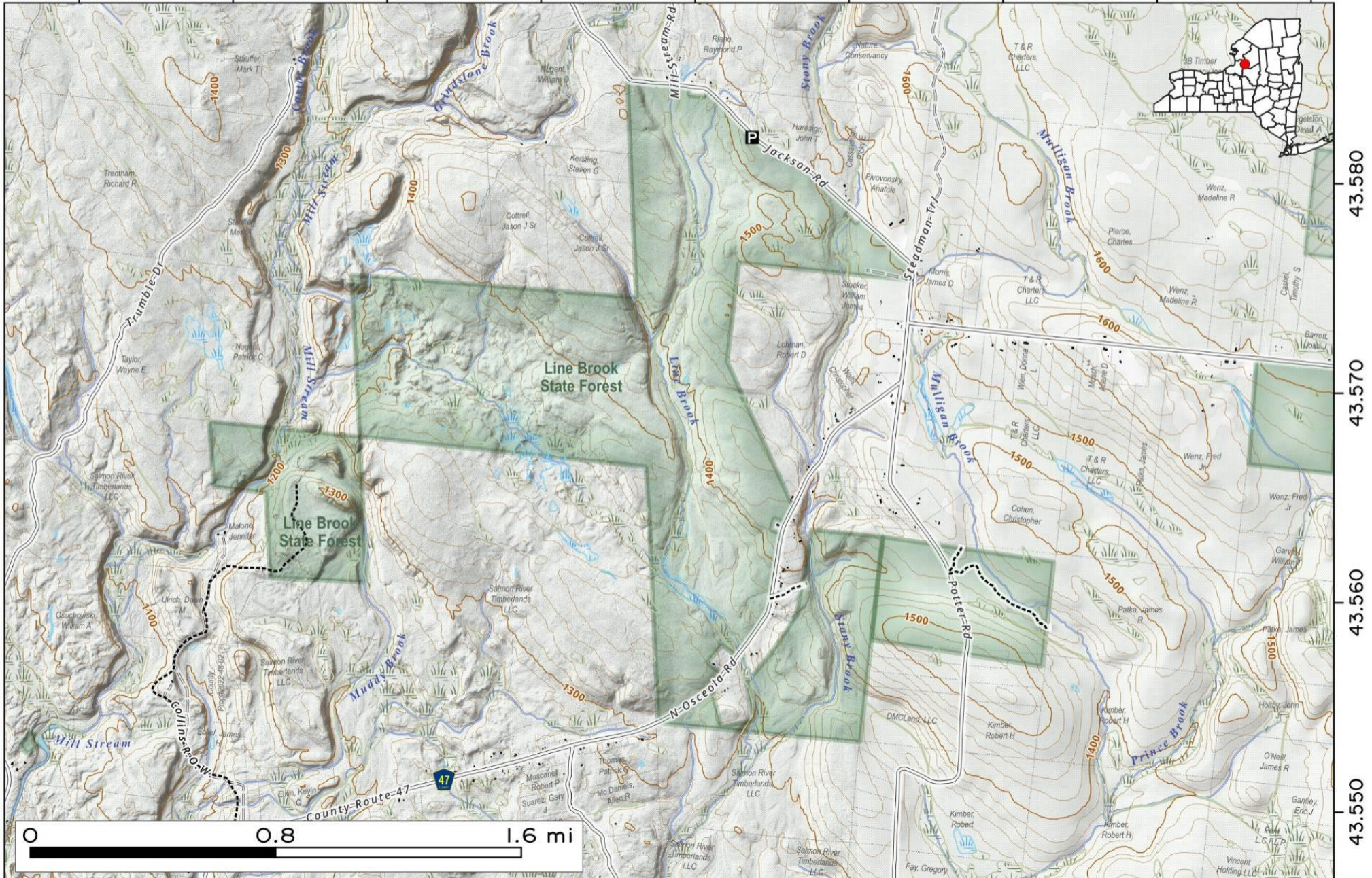


Line Brook State Forest is east of the Salmon River Reservoir on the Tug Hill Plateau. The forest is primarily comprised of natural hardwood and conifer stands. It is a popular destination for nature enthusiasts, hunters, and trappers seeking white-tailed deer, bear, and various small game species.



Map created by Andy Arthur on 11/6/2025 in QGIS 3.44.4-Solothurn. Contains NYS GIS and DEC data with additional campsites added by Andy. More maps at andyarthur.org.

-75.800 -75.790 -75.780 -75.770 -75.760 -75.750 -75.740 -75.730 -75.720

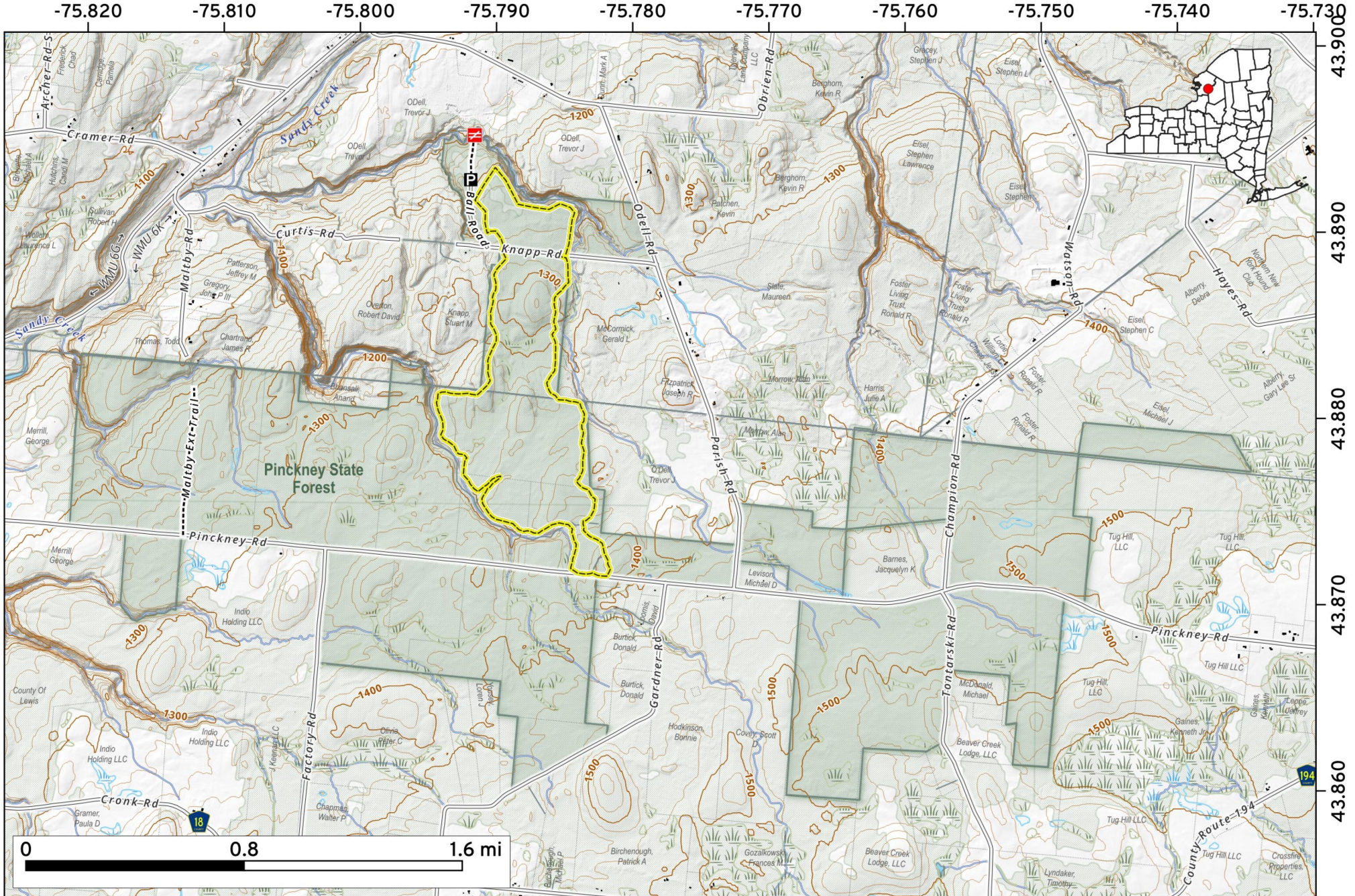


43.580
43.570
43.560
43.550

Located on the Tug Hill Plateau in Lewis and Jefferson counties, the 2,091-acre **Pinckney State Forest** is known for harsh winters and shallow soils. It offers primitive camping, trout fishing in Sandy Creek tributaries, and the 4.3-mile Pinckney Bike Trail, featuring scenic views of a deep woodland gulf.



Map created by Andy Arthur on 2/10/2026 in QGIS 3.44.7-Solothurn. Data: NYS GIS and NYS DEC. More at andyarthur.org.



Swancott Mill State Forest. 744 acre state forest northwest of City of Rome Reservoir N and West Leyden, off Osceola Road and Swancott Mill Road.

Map created by Andy Arthur on 1/8/2026 in QGIS 3.44.6-Solothurn. Contains NYS GIS and DEC data with additional campsites added by Andy. More maps at andyarthur.org.

