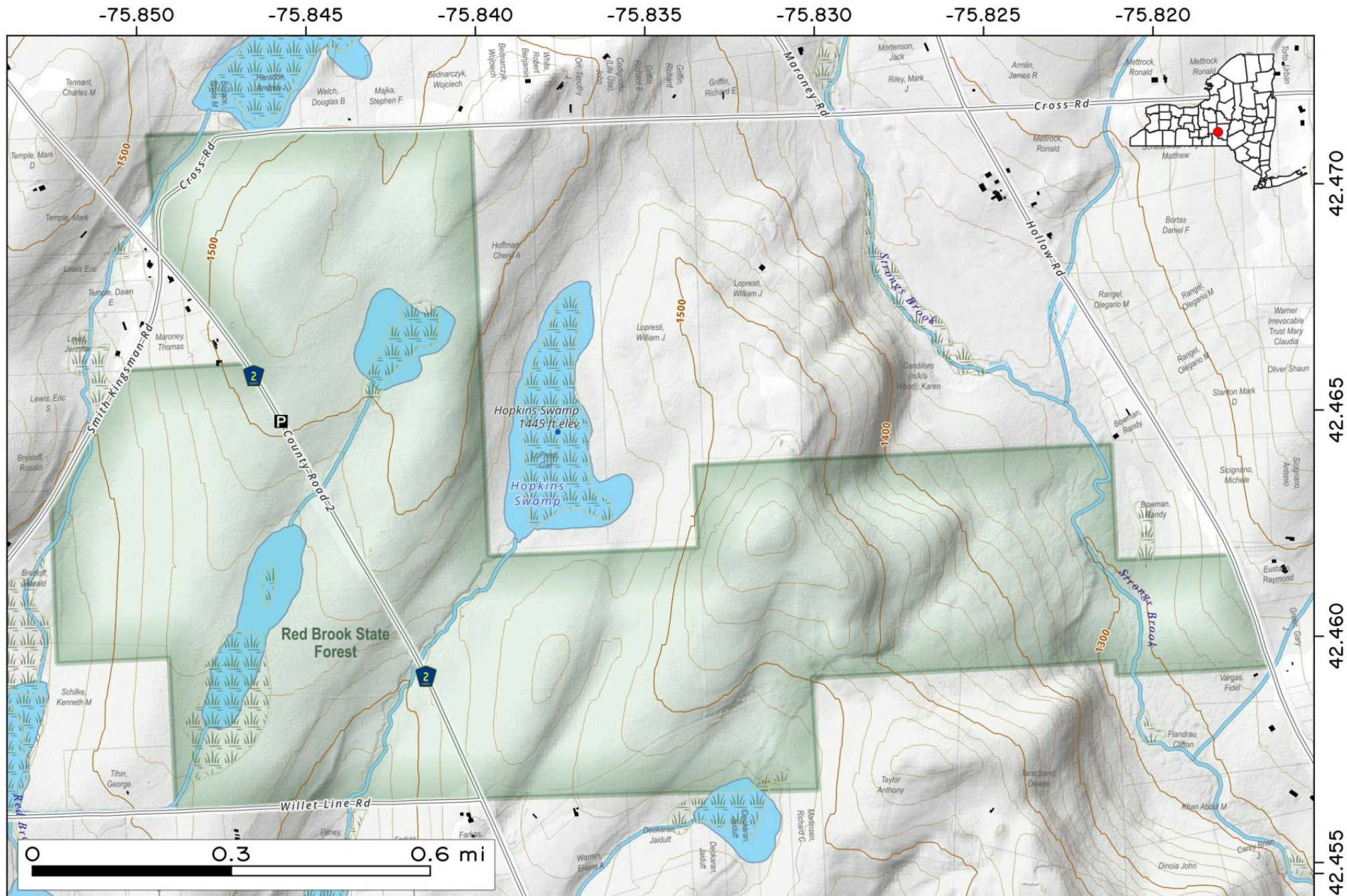


Red Brook State Forest

This state forest consists of 601 acres that is a mixture of wetland and forest in the hamlet of German on the Cortland-Chenango County border (WMU 7M).

Map created by Andy Arthur on 10/30/2025 in QGIS 3.44.3-Solothurn. Contains NYS GIS and DEC data with additional campsites added by Andy. More maps at andyarthur.org.

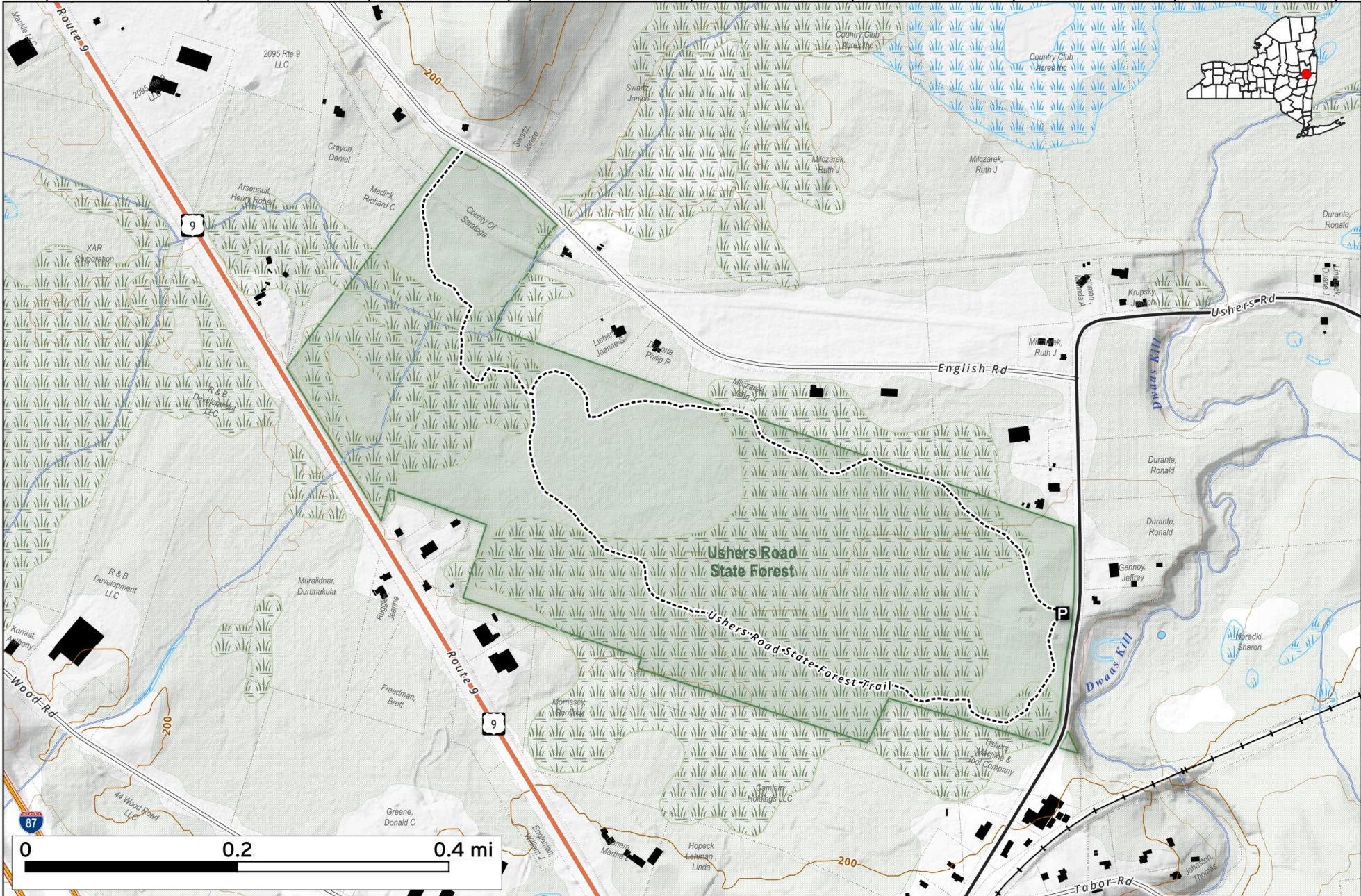


Ushers Road State Forest. 118 acres of wetlands along the Zim Smith Trail and between US 9, English Road and Ushers Road in Clifton Park. (WMU 5R)



Map created by Andy Arthur on 2/2/2026 in QGIS 3.44.6-Solothurn. Data: NYS GIS and NYS DEC. More at andyarthur.org.

-73.791 -73.788 -73.785 -73.782 -73.779 -73.776 -73.773 -73.770 -73.767



42.918

42.915

42.912

42.909