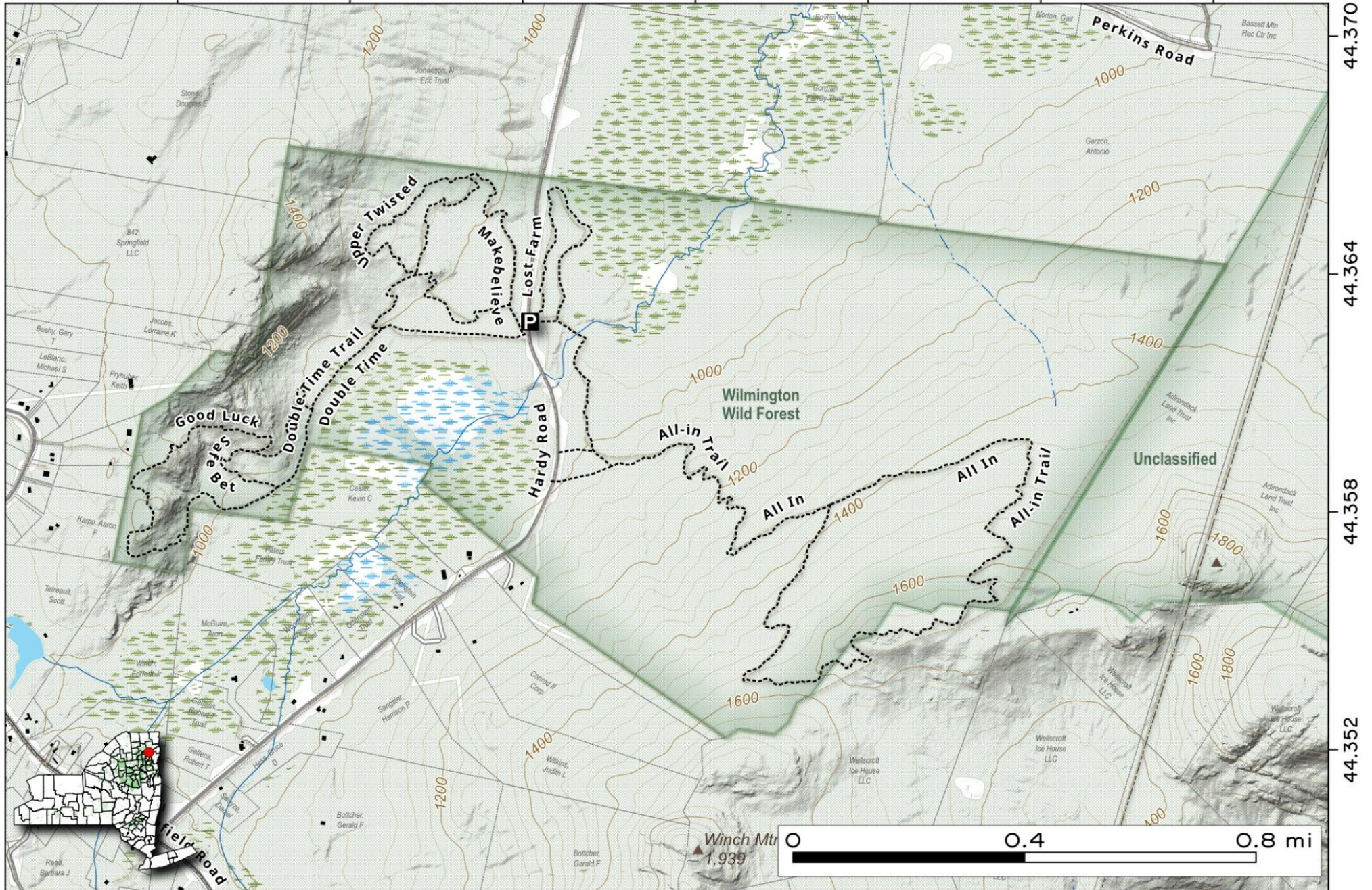


Outside of Willington is the **Beaver Brook Tract** a relatively small forest preserve parcel of 709 acres with mountain bike trails and cross country skiing in the winter. Additional lands to the east have recently been added to the forest preserve.

Map created by Andy Arthur on 9/25/2025 in QGIS 3.44.2-Solothurn. Contains US Forest Service Base Map, NYS DEC data with additional campsites added by Andy. More maps at [andyarthur.org](http://andyarthur.org).



-73.812      -73.806      -73.800      -73.794      -73.788      -73.782      -73.776



The Clements Pond Trail takes you back to quiet pond located in the Wilmington Wild Forest near Keene, New York. Accessible by a moderately hiking trail, it offers a nearby alternative from the more crowded high peaks. The area is bordered by a mix of hardwood and evergreen trees and is home to beavers, making it ideal for peaceful hiking, fishing, and snowshoeing. An off-trail ledge provides stunning vistas of the surrounding mountains.

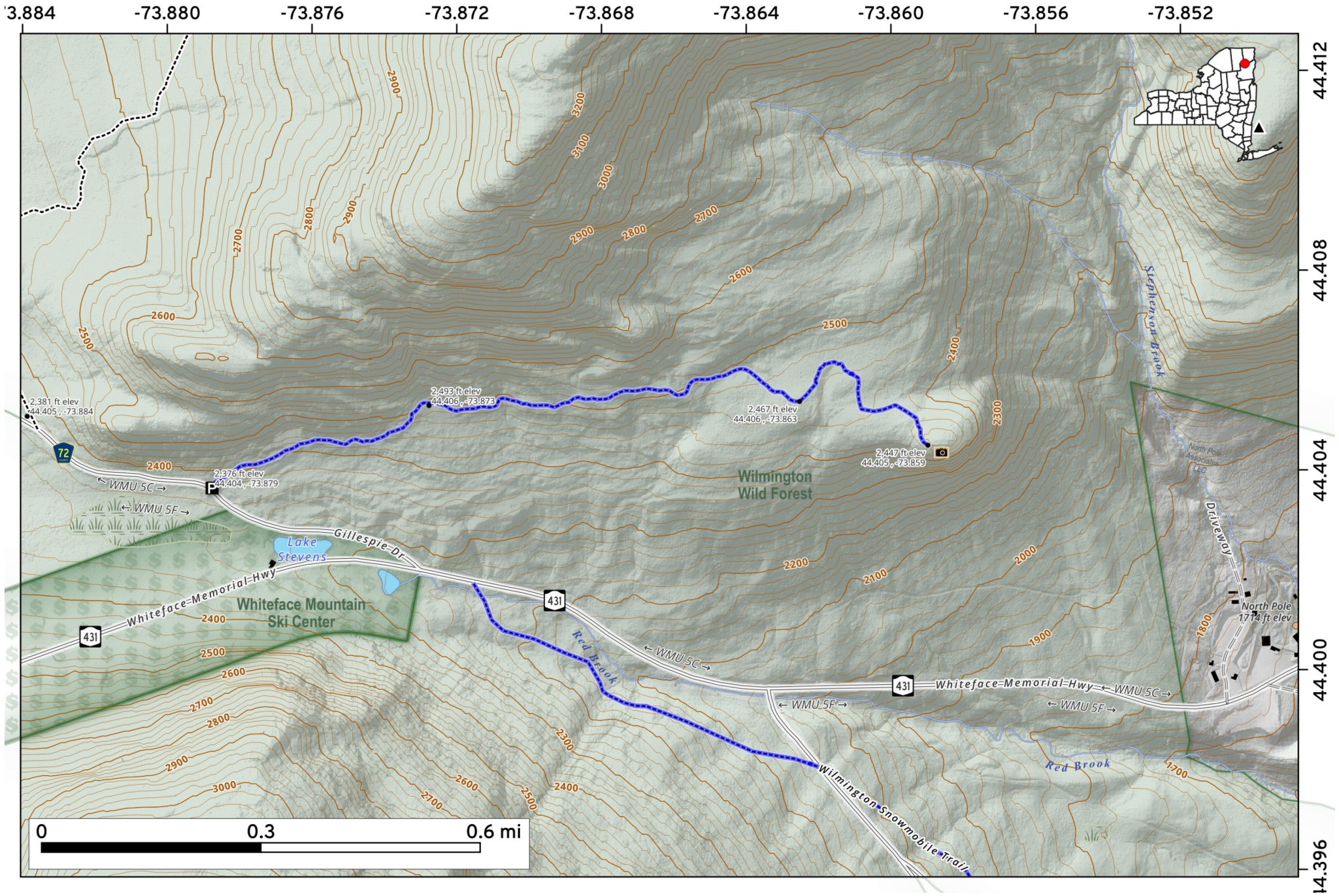
Map created by Andy Arthur on 10/24/2025 in QGIS 3.44.3-Solothurn. Contains NYS GIS and DEC data with additional campsites added by Andy. More maps at [andyarthur.org](http://andyarthur.org).



**Cobble Knob Trail in Wilmington.** Constructed in 2014, this 1.3-mile trail offers minimal ascent to a stunning viewpoint of Ausable Valley and nearby mountains. Accessible from Gillespie Drive on way towards Whiteface Memorial Drive, it begins with blue-marked signs off Route 431.



Map created by Andy Arthur on 2/2/2026 in QGIS 3.44.6-Solothurn. Data: NYS GIS and NYS DEC. More at [andyarthur.org](http://andyarthur.org).

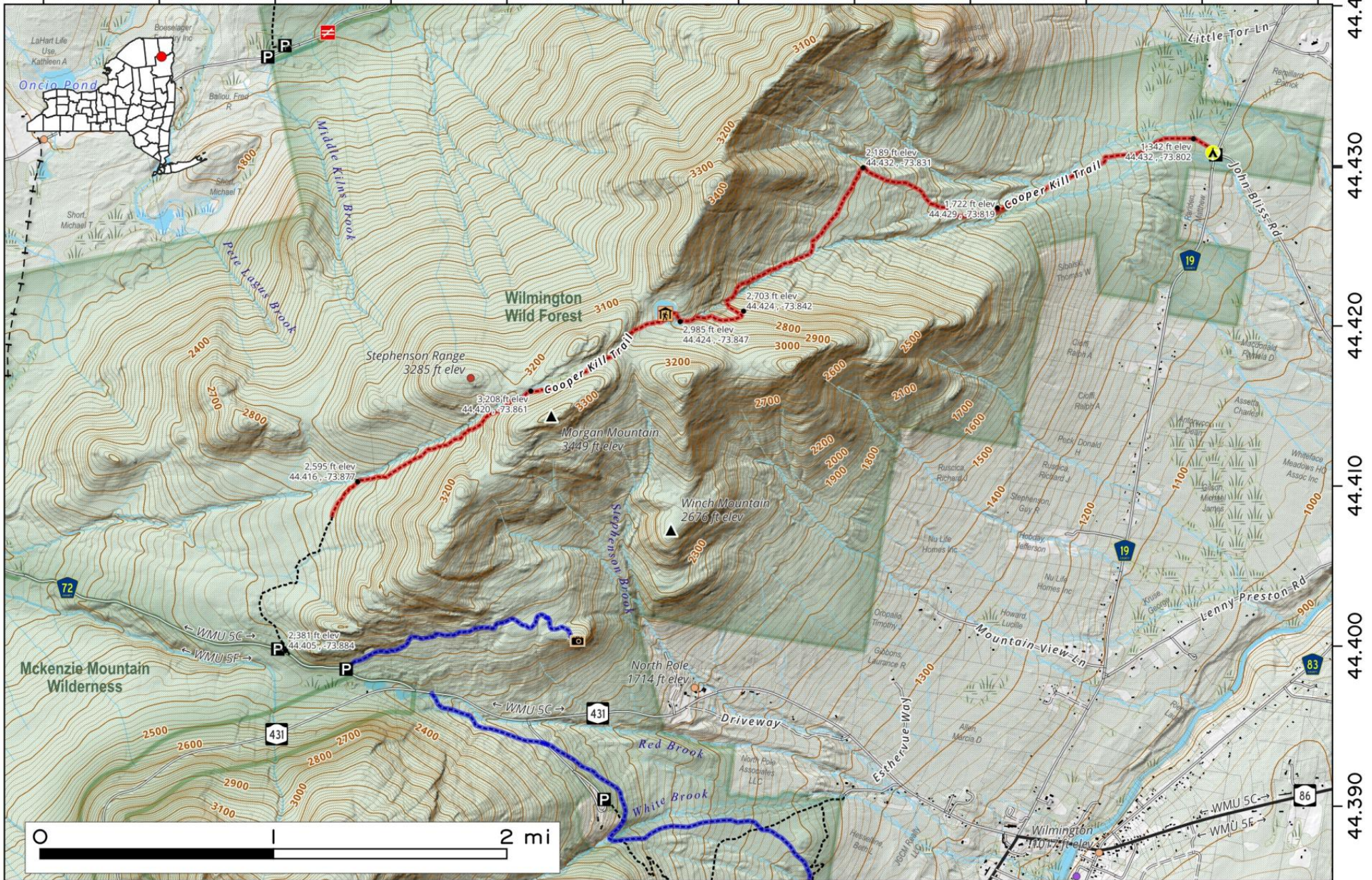


The Cooper Kiln Pond Trail, leads hikers through Wilmington Wild Forest to a scenic, remote pond with a lean-to. The moderate, out-and-back trail traverses an old woods road and offers varied terrain, from gentle climbs through evergreen forests to steeper, rockier sections. At 2.7 miles one-way, the destination features a pristine, high-elevation pond and views of surrounding mountain ranges. 3.8 miles from Boonview Road to Guilespy Road.

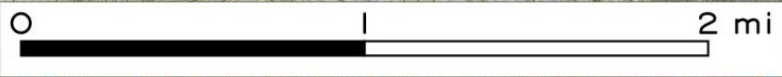


Map created by Andy Arthur on 10/23/2025 in QGIS 3.44.3-Solothurn. Contains NYS GIS and DEC data with additional campsites added by Andy. More maps at [andyarthur.org](http://andyarthur.org).

-73.900 -73.890 -73.880 -73.870 -73.860 -73.850 -73.840 -73.830 -73.820 -73.810 -73.800 -73.790



44.440  
44.430  
44.420  
44.410  
44.400  
44.390



The Owen Pond- Copperas Pond Trail is 1.7 miles long and connects two trailheads on State Route 86. The trail takes you through forest, past Owen Pond at the foot of Kilburn Mountain, and on to Copperas Pond. A short loop trail branches off to Winch Pond. You can also start directly at Copperas Pond with a steeper 0.5-mile hike from the other trailhead.

Map created by Andy Arthur on 10/24/2025 in QGIS 3.44.3-Solothurn. Contains NYS GIS and DEC data with additional campsites added by Andy. More maps at [andyarthur.org](http://andyarthur.org).

